

FINE JEWELRY

Tuesday December 6, 2016



Bonhams

NEW YORK



FINE JEWELRY

Tuesday December 6, 2016 at 11am
New York

BONHAMS

580 Madison Avenue
New York, New York 10022
bonhams.com

PREVIEW

Los Angeles

Friday November 18, 12pm to 5pm
Saturday November 19, 12pm to 5pm
Sunday November 20, 12pm to 5pm

Hong Kong (Highlights)

Saturday November 26, 10am to 7pm
Sunday November 27, 10am to 7pm
Monday November 28, 10am to 7pm
Tuesday November 29, 10am to 12pm

New York

Thursday December 1, 10am to 5pm
Friday December 2, 10am to 5pm
Saturday December 3, 12pm to 5pm
Sunday December 4, 12pm to 5pm
Monday December 5, 10am to 5pm

SALE NUMBER: 23483

Lots 1 - 179

CATALOG: \$35

BIDS

+1 (212) 644 9001
+1 (212) 644 9009 fax

To bid via the internet please visit
www.bonhams.com/23483

Please note that telephone bids must be submitted no later than 4pm on the day prior to the auction. New bidders must also provide proof of identity and address when submitting bids.

Please contact client services with any bidding inquiries.

Please see pages 96 to 99 for bidder information including conditions of sale, after-sale collection and shipment.

INQUIRIES

Matthew Girling
Group Jewelry Director
matthew.girling@bonhams.com

New York

+1 (212) 461 6526
Susan Abeles, Director, US Jewelry
Caroline Bostock
Camille Barbier, GG
camille.barbier@bonhams.com

Los Angeles

+1 (323) 436 5424
Dana Ehrman, Director, LA Jewelry, GG
Claire De Biasio-Paris, GG
Kelly Sitek, GG
kelly.sitek@bonhams.com

San Francisco

+1 (415) 503 3306
Shannon Beck, GG
shannon.beck@bonhams.com

Automated Results Service

+1 (800) 223 2854

ILLUSTRATIONS

Front cover: Lot 179
Inside front cover: Lot 23
Inside back cover: Lot 174
Back cover: Lot 171

COLLECTION

Successful buyers with San Francisco and Los Angeles shipping addresses will have their purchases shipped to that office for pick-up. If you have a San Francisco or Los Angeles shipping address and do not want your purchase sent there for collection please notify us directly by Wednesday the 7th. Purchases will be available for pick-up in San Francisco and Los Angeles on Monday the 12th.

INCLUDING PROPERTY FROM

A Lady
A Michigan Lady
A Midwest Family
A New York Collection
A New York Diamond Manufacturer's Family
A Philadelphia Family
A Private Houston Collection
A Royal Family
An Oregon Lady
An Oregon Private Collector
The Joyce B. Doheny Trust
Sold to benefit a New York Property



INDEX

NAME	LOT NUMBER
Alexandre Laut	129, 164
Ambrosi	53
Bertina for Hammerman Bros.	55
Buccellati	33, 64
Cartier	7, 31, 32, 35, 58, 93, 117, 127, 128
Carvin French	74
Charton & Co.	15
David Webb	45, 46, 50, 52, 107, 145, 147
Hamilton	5
Hans Richter	30
Hardy Brothers	165
Harry Winston	161
Henri Kaston after Salvador Dali	54
Ilias Lalaounis	44
Jules Wiese	43
Louis Tamis	25
Mapamenos Natepas	47
Marcus & Co.	42
Marina B.	70
Masriera	41
Mauboussin	141
Mellerio	130
Piaget	69
Regner	26
Ruser	60, 65, 67, 77, 96, 106, 111, 113, 115, 119
Shreve & Co.	178
Tiffany & Co.	8, 29, 40, 154, 177
Trabert, Hoeffler & Mauboussin	175
Van Cleef & Arpels	34, 38, 59, 61, 62, 66, 71, 75, 76, 78, 79, 80, 81, 83, 84, 85, 86, 87, 88, 89, 90, 91, 92, 94, 95, 98, 99, 126, 134
Waslikoff	163

DIAMOND GRADING

COLOR

GIA	CIBJO	UK TRADITIONAL
D	Exceptional White +	Finest White
E	Exceptional White	Finest White
F	Rare White +	Fine White
G	Rare White	Fine White
H	White	White
I	Slightly Tinted White	Commercial White
J	Slightly Tinted White	Top Silver Cape
K	Tinted White	Top Silver Cape
L	Tinted White	Silver Cape
M TO N	Tinted Color	Light Cape
O TO R	Tinted Color	Cape
R TO Z	Tinted Color	Dark Cape

CLARITY

IF	Internally Flawless	No inclusions and only insignificant surface blemishes when viewed under 10X magnification
VVS1 - VVS2	Very Very Slightly Included	Minute inclusions that are incredibly difficult to see under 10X magnification, generally only visible from the back of the stone and may be removed easily by repolishing
VS1 - VS2	Very Slightly Included	Minor inclusions that range from difficult (VS1) to slightly easier (VS2) to see under 10X magnification
S11 - 2	Slightly Included	Noticeable inclusions that are easy (S11) or very easy (S12) to see under 10X magnification
I1 - 3	Obvious Inclusions	Obvious inclusions that are easily visible under 10X magnification and in some cases may even be seen without magnification

RING SIZES

ENGLISH	METRIC	AMERICAN	FRENCH/JAPANESE
A	37.8252	½	-
A½	38.4237	¾	-
B	39.0222	1	-
B½	39.6207	1¼	-
C	40.2192	1½	-
C½	40.8177	1¾	-
D	41.4162	2	1
D½	42.0147	2¼	2
E	42.6132	2½	-
E½	43.2117	2¾	3
F	43.8102	3	4
F½	44.4087	3¼	-
G	45.0072	3½	5
G½	45.6057	3¾	-
H	46.2042	4	6
H½	46.8027	4¼	-
I	47.4012	4½	7
I½	47.9997	4¾	8
J	48.5982	5	-
J½	49.1967	5¼	9
K	49.7952	5½	10
K½	50.3937	5¾	-
L	50.9922	6	11
L½	51.5907	6¼	-
M	52.1892	6½	12
M½	52.7877	6¾	13
N	53.4660	7	-
N½	54.1044	7¼	14
O	54.7428	7½	15
O½	55.3812	7¾	-
P	56.0196	8	16
P½	56.6580	8¼	-
Q	57.2964	8½	17
Q½	57.9348	8¾	18
R	58.5732	9	-
R½	59.2116	9¼	19
S	59.8500	9½	20
S½	60.4884	9¾	-
T	61.1268	10	21
T½	61.7652	10¼	22
U	62.4026	10½	-
U½	63.0420	10¾	23
V	63.6804	11	24
V½	64.3188	11¼	-
W	64.8774	11½	25
W½	65.4759	11¾	-
X	66.0744	12	26
X½	66.6729	12¼	-
Y	67.2714	12½	-
Y½	67.8699	12¾	-
Z	68.4684	13	-



1
AN ART DECO DIAMOND AND SAPPHIRE BRACELET, CIRCA 1925
 designed as an articulated strap, set with old European and old mine-cut diamonds, accentuated by calibré-cut sapphires, with millegain accents and scrolled engraved edges; *estimated total diamond weight: 9.00 carats; mounted in platinum; length: 6 7/8in.*

\$6,000 - 8,000

2
AN ART DECO DIAMOND AND EMERALD BRACELET, CIRCA 1925
 designed as an articulated pavé-set diamond band, enhanced with marquise brilliant-cut diamonds, centering a line of calibré-cut emeralds; *estimated total diamond weight: 12.30 carats; mounted in platinum; length: 7 1/4in.*

\$7,000 - 9,000

3
A PAIR OF ART DECO DIAMOND AND SAPPHIRE EARRINGS, CIRCA 1925
 centered by articulated free falling cushion-shaped diamonds, weighing 2.09 and 2.03 carats, within a circular open-work frame of pavé-set old mine-cut diamonds and calibré-cut sapphires, suspended from a similarly cut diamond surmount; *mounted in platinum; length: 2 5/16in.*

\$18,000 - 25,000



4



5



6

4

A DIAMOND PENDANT

designed as a cross, centering an old European-cut diamond, weighing 2.14 carats, set throughout with old European and single-cut diamonds; *estimated remaining diamond weight: 5.50 carats; mounted in platinum; length: 2 11/16in.*

\$8,000 - 12,000

5

AN EMERALD AND DIAMOND RING, HAMILTON

centering an octagonal step-cut emerald, weighing 1.60 carats, flanked either side by shield-cut diamonds, within a round brilliant-cut diamond surround; *signed Hamilton; mounted in platinum; size 6*

\$20,000 - 30,000

Accompanied by AGL report # CS 67136, dated April 17, 2015, stating the emerald as: Colombian origin, indications of insignificant to minor modern enhancement.

Accompanied by GIA report # 1152027483, dated October 23, 2012, stating the emerald as: Colombian origin, no indications of clarity enhancement.

PROPERTY OF THE JOYCE B. DOHENY TRUST

6

AN ART DECO CARVED SAPPHIRE RING, CIRCA 1925

centering a carved sapphire initialed "ELD JR", weighing approximately 6.50 carats, with inlaid gold shoulders of geometric design; *mounted in platinum and 18k gold; size 7*

\$1,500 - 2,500



7

8



9

PROPERTY OF A NEW YORK COLLECTION

7
AN ART DECO JADEITE JADE AND DIAMOND RING, CARTIER, CIRCA 1925
 centering an oval-shaped jadeite jade cabochon, with round brilliant-cut diamond set shoulders; *signed Cartier; mounted in platinum; size 6 3/4in.*

\$10,000 - 15,000

Accompanied by Mason-Kay report # 161025-4, dated October 25, 2016, stating the jade as: Natural Jadeite Jade, no dye or polymer detected - 'A' Jade.

Accompanied by GIA report # 5171619712, dated June 02, 2016, stating the jade as: Jadeite Jade, no indication of impregnation, natural color.

PROPERTY OF VARIOUS OWNERS

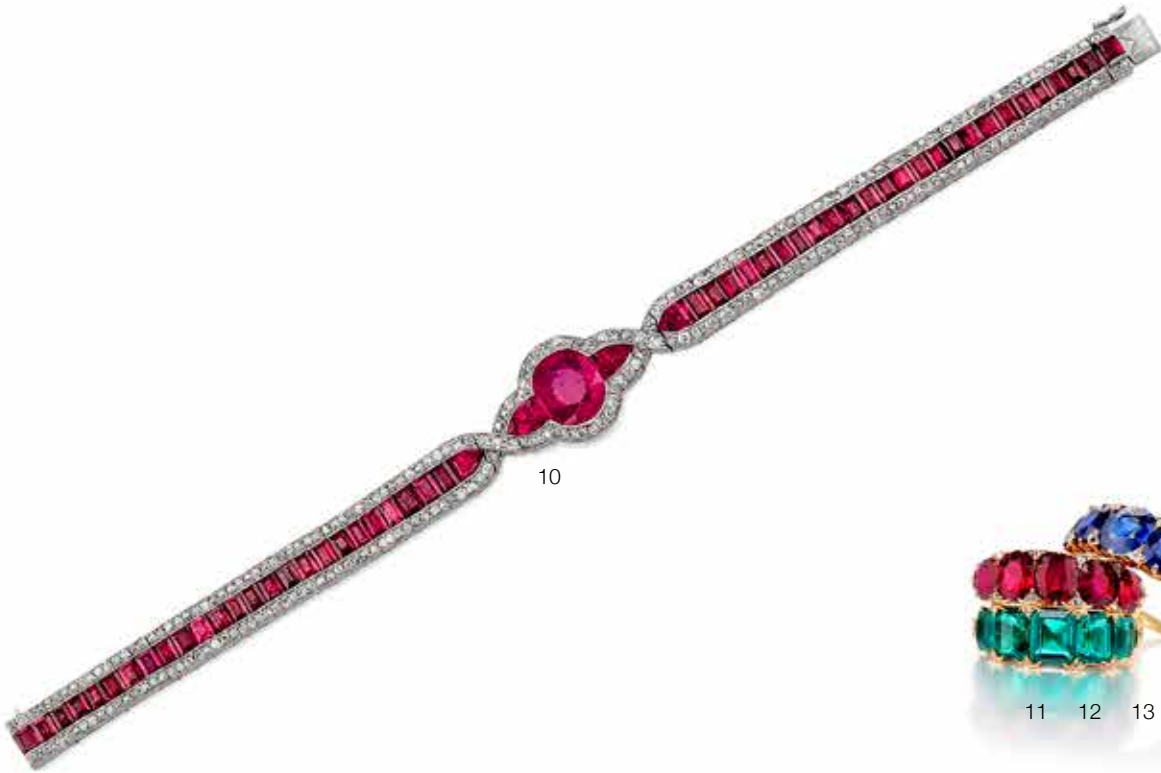
8
A NATURAL PEARL AND DIAMOND NECKLACE, TIFFANY & CO.
 designed as a graduated single strand of natural pearls, measuring approximately 9.5 to 3.1mm, set with a marquise brilliant-cut diamond clasp; *signed Tiffany & Co.; accompanied by a signed pouch and box; mounted in platinum and 14k gold; length: 24 1/4in.*

\$20,000 - 30,000

Accompanied by GIA report # 1940108, dated February 01, 1989, stating the pearls as: 109 natural and 1 cultured pearl (#12 from clasp end).

9
AN ART DECO DIAMOND BRACELET, FRENCH, CIRCA 1925
 of articulated geometric design, enhanced throughout with old European-cut diamonds; *with French maker's mark and French assay mark; estimated total diamond weight: 30.00 carats; mounted in platinum; length 7 5/16in.*

\$25,000 - 35,000



10

11 12 13

10

AN ART DECO RUBY AND DIAMOND BRACELET, CIRCA 1925

centering a cushion mixed-cut ruby, weighing approximately 3.25 carats, enhanced either side by bullet-shaped step-cut rubies, within an old European-cut diamond surround, to a rectangular step-cut ruby line bracelet, framed by old European-cut diamonds; *stamped no.41207 and no.2176; estimated total diamond weight: 2.50 carats; mounted in platinum; length: 7 5/8in.*

\$40,000 - 60,000

Accompanied by AGL report # CS 1077442, dated August 15, 2016, stating the ruby as: Burma (Myanmar) origin, no indications of heat or clarity enhancement.

11

AN EMERALD AND DIAMOND RING

a graduated row of rectangular step-cut emeralds, largest to the center, measuring approximately 7.2 x 5.9 x 3.9mm to 5.4 x 4.5 x 2.9mm, accented by rose-cut diamonds; *mounted in 14 gold; size 7 3/4*

\$5,000 - 8,000

Accompanied by AGL report # CS 1079354, dated October 24, 2016, stating the emeralds as: Classic Colombian origin, indications of insignificant traditional enhancement.

12

A RUBY AND DIAMOND RING

a graduated row of cushion mixed-cut rubies, largest to the center, measuring approximately 6.8 x 5.5 x 4.1mm to 5.5 x 4.8 x 2.9mm, accented by rose-cut diamonds; *mounted in 14k gold; size 7 3/4*

\$5,000 - 8,000

Accompanied by AGL report # CS 1079353, dated October 24, 2016, stating the ruby as: Classic Burma (Myanmar) origin, no indications of heat or clarity enhancement.

13

A SAPPHIRE AND DIAMOND RING

a graduated row of cushion mixed-cut sapphires, largest to the center, measuring approximately 7.68 x 6.20 x 3.56 to 5.82 x 4.10 x 3.05mm, accented by rose-cut diamonds; *mounted in 14k gold; size 7 3/4*

\$2,500 - 3,500

Accompanied by AGL report # CS 1079352, dated October 24, 2016, stating the sapphires as: Classic Burma (Myanmar) origin, no indications of heat or clarity enhancement.





14



15



16



17

14
A NATURAL PEARL, EMERALD AND DIAMOND NECKLACE
 composed of a single strand of graduated pearls, measuring approximately 7.2 to 4.2mm, enhanced by an oval single-cut emerald, within an old European-cut diamond surround; *mounted in 14k white gold; length: 19 1/2in.*

\$5,000 - 7,000

Accompanied by GIA report # 5171914671, dated October 21, 2016, stating the pearls as: natural saltwater pearls, no indications of treatment.

15
A MOONSTONE AND DIAMOND RING, CHARLTON & CO.
 centering an oval-shaped moonstone cabochon, weighing approximately 6.15 carats, framed by old European-cut diamonds; *signed Charlton, no.5147; estimated total diamond weight: 2.40 carats; mounted in platinum; size 5*

\$5,000 - 8,000

16
A FANCY COLORED SAPPHIRE AND DIAMOND RING
 centering an oval mixed-cut pink sapphire, weighing 3.63 carats, within an openwork surround of round brilliant-cut diamonds; *mounted in 18k white gold; size 7*

\$5,000 - 8,000

Accompanied by a GRS report # GRS2015-081524, dated September 24, 2015, stating the pink sapphire as: Madagascar origin, no indications of heat.

17
A FANCY COLORED SAPPHIRE AND DIAMOND RING
 centering a light violet octagonal modified brilliant-cut sapphire, measuring approximately 12.2 x 10.5 x 6.5mm, within a geometric surround of pavé-set round brilliant-cut diamonds, accented by rectangular-cut diamonds; *mounted in platinum; size 3 3/4*

\$7,000 - 9,000

Accompanied by AGL report # CS 1073899, dated April 18, 2016, stating the sapphire as: Ceylon (Sri Lanka) origin, no indications of heat or clarity enhancement.



18



19

18

A PAIR OF TURQUOISE AND DIAMOND EAR CLIPS

designed as a stylized bouquet, centering oval-shaped turquoise cabochons, enhanced with baguette-cut and round brilliant-cut diamonds; *estimated total diamond weight: 11.50 carats; mounted in platinum and 18k gold; length: 1 1/2in.*

\$6,000 - 8,000

19

A DIAMOND BRACELET

designed as three geometric panels, each centering a marquise brilliant-cut diamond, enhanced with baguette-cut diamonds within a frame of round brilliant-cut diamonds, spaced by open oval loops set with similarly cut diamonds; *stamped no.737207; estimated total diamond weight: 15.40 carats; mounted in platinum; length: 7 1/2in. (one diamond deficient)*

\$10,000 - 15,000



20

20

A PAIR OF DIAMOND HOOP EARRINGS

of hinged circular form, the front piece set with a double row of round brilliant-cut diamonds, the inner section of the reverse similarly set; *estimated total diamond weight: 12.00 carats; mounted in 18k white gold; length: 1 1/2in.*

\$8,500 - 10,000



21

21

A SAPPHIRE AND DIAMOND RING

centering an oval mixed-cut sapphire, weighing 3.23 carats, within a radiating surround of round brilliant-cut diamonds; *estimated total diamond weight 4.50 carats; mounted in 18k white gold; size 8*

\$5,000 - 7,000

Accompanied by AGL report # CS 1077257, dated July 29, 2016, stating the sapphire as: no indications of heat or clarity enhancement.



22

22

A SAPPHIRE AND DIAMOND RING

centering a cushion mixed-cut sapphire, weighing 8.82 carats, within a double row surround of round brilliant-cut diamonds; *estimated total diamond weight: 4.20 carats; mounted in platinum; size 6 1/4*

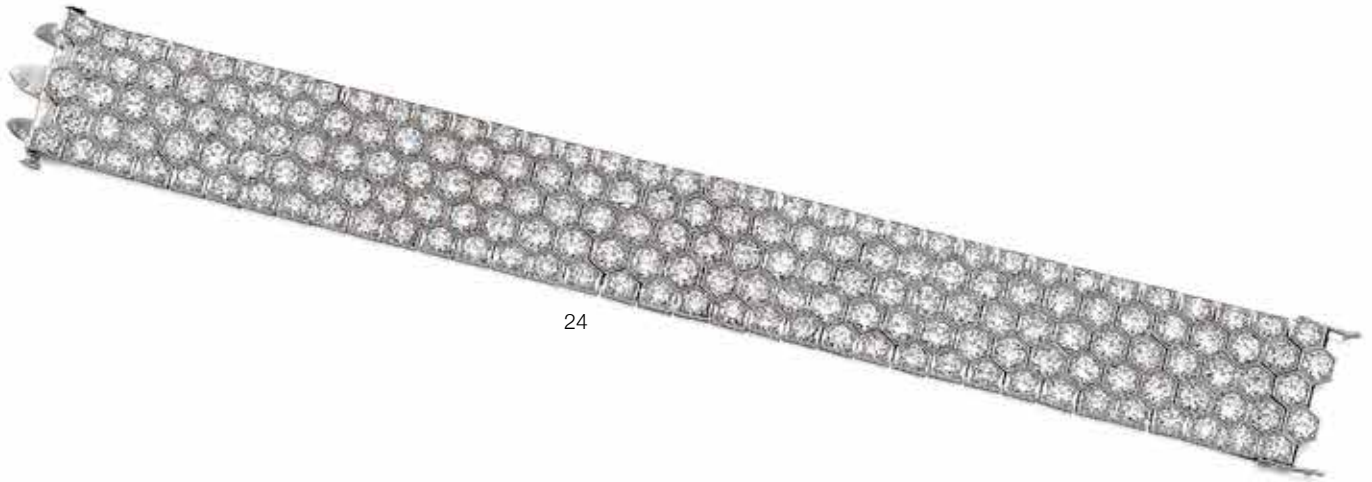
\$40,000 - 60,000

Accompanied by GIA report # 1146622590, dated July 10, 2012, stating the sapphire as: Burma (Myanmar) origin, no indications of heat.

Accompanied by AGL report # CS 50190, dated June 27, 2012, stating the sapphire as: Ceylon (Sri Lanka) origin, no indications of heat or clarity enhancement.



23



24

PROPERTY OF A MICHIGAN LADY

23
AN ART DECO DIAMOND AND SAPPHIRE BROOCH, FRENCH, CIRCA 1915

of octagonal form, centering three square step-cut diamonds, set within a foliate design of baguette, square and single-cut diamonds, enhanced by calibré-cut sapphires; stamped France, no.90643, French assay mark; estimated total diamond weight: 4.00 carats; mounted in platinum; length: 1 7/8in.

\$8,000 - 10,000

24
A DIAMOND BRACELET, FRENCH

a flexible band of honeycomb design, set with old European and round brilliant-cut diamonds; unsigned, with maker's mark and French assay mark; estimated total diamond weight: 30.00 carats; mounted in platinum and 18k white gold; length: 7 1/4in.

\$25,000 - 35,000





25



26



27

28

PROPERTY OF THE JOYCE B. DOHENY TRUST

25
AN 18K GOLD AND DIAMOND CLUTCH PURSE, LOUIS TAMIS
 of woven mesh design with scalloped edges, centering a round brilliant-cut diamond monogram "JBD"; *signed with maker's mark; accompanied by a fitted case; estimated total diamond weight: 2.50 carats; gross weight approximately: 547.70 grams; dimensions: 6 1/2 x 2 x 4in.*

\$10,000 - 15,000

PROPERTY OF VARIOUS OWNERS

26
A RETRO RUBY, DIAMOND AND 18K ROSE GOLD BRACELET, REGNER, FRENCH, CIRCA 1940
 designed as a flexible brick work band, centered by a scroll motif, adorned with calibr -cut rubies and round brilliant-cut diamonds; *signed Regner - Paris, with French assay marks; gross weight approximately: 91.50 grams; length: 6 1/2in.*

\$7,000 - 9,000

27
A RETRO 18K ROSE GOLD BRACELET, CIRCA 1940
 designed as a series of openwork arched panels; *weight approximately: 153.20 grams; length: 9in.*

\$5,000 - 7,000

28
A RETRO 18K GOLD BRACELET, ITALIAN, CIRCA 1940
 composed of eight panels of scrolled design, interspersed with oval links; *with Italian assay marks; weight approximately: 122.10 grams; length: 8in.*

\$8,000 - 10,000



29

29

**AN UNUSUAL IRON AND HIGH CARAT OVERLAY
DAMASCENE CUFF BRACELET, ANGELA CUMMINGS FOR
TIFFANY & CO., CIRCA 1984**

the cuff designed as a diagonally twisted band of iron and 24k gold;
signed T&Co; weight approximately: 69.10 grams; diameter: 2 1/2in.

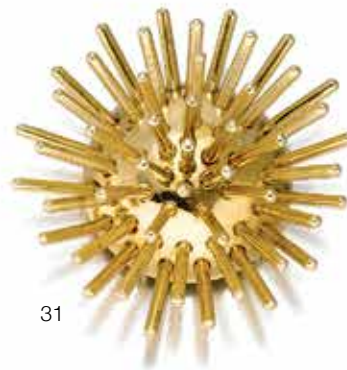
\$3,000 - 5,000



30

30
AN 18K GOLD BROOCH, HANS RICHTER, CIRCA 1970
of layered geometric form design; *signed*
4/9 Hans Richter 71, HR1 GM; *weight*
approximately: 55.60 grams; length: 2 1/8in.

\$5,000 - 7,000



31

31
A 14K GOLD "SPUTNIK" BROOCH, CARTIER, CIRCA 1960
of three-dimensional design, with spikes
radiating from a domed base; *signed*
Cartier; *weight approximately: 32.70 grams;*
diameter: 1 3/4in.

\$3,000 - 5,000



32

32
AN 18K GOLD "PERRUQUE" RING, CARTIER, 1999
centering upon a cluster of articulated gold
bead tassels, to a polished gold band; *signed*
Cartier, 1999, no.97665, with maker's mark;
weight approximately: 37.90 grams; size 8
1/2

\$5,000 - 7,000



33



34

PROPERTY OF AN OREGON LADY

33
AN 18K GOLD “CREPE DE CHINE” NECKLACE, BUCCELLATI, ITALY
designed as a flexible collar of loosely woven gold rope; *signed Buccellati, Italy, with assay marks; weight approximately: 130.00 grams; length: 15 1/2in.*

\$6,000 - 8,000

PROPERTY OF THE JOYCE B. DOHENY TRUST

34
A DIAMOND RING, VAN CLEEF & ARPELS
pavé-set with six rows of round brilliant-cut diamonds; *signed VCA, no.SO2249; estimated total diamond weight: 6.70 carats; mounted in 18k gold; size 5*

\$3,000 - 5,000

PROPERTY OF ANOTHER OWNER

35
A PAIR OF DIAMOND AND RUBY EARRINGS, CARTIER, CIRCA 1980
designed as a cascade, earring top centrally set with round brilliant-cut diamonds, enhanced either side by calibré-cut rubies, suspending an inverted drop of similar design, joined by a collet-set round brilliant diamond; *signed Cartier, no.38141; estimated total diamond weight: 4.25 carats; mounted in 18k gold; length: 2 1/2in.*

\$6,000 - 8,000



35

36

37

38

PROPERTY OF A ROYAL FAMILY

36
A DIAMOND LINE BRACELET
 designed as an articulated line of round brilliant-cut diamonds; *estimated total diamond weight: 24.00 carats; mounted in 18k gold; length 7 1/2in.*

\$15,000 - 20,000

PROPERTY OF ANOTHER OWNER

37
A DIAMOND RING
 bezel-set with a marquise brilliant-cut diamond, weighing 1.96 carats, within a pavé-set round brilliant-cut diamond surround; *estimated total diamond weight: 1.00 carat; mounted in platinum and 18k gold; size 9*

\$15,000 - 20,000

Accompanied by GIA report # 2171789518, dated August 10, 2016, stating the diamond as: E color, VVS1 clarity.

PROPERTY OF THE JOYCE B. DOHENY TRUST

38
AN EMERALD AND DIAMOND RING, VAN CLEEF & ARPELS
 centering a cushion-shaped emerald cabochon, weighing approximately 5.30 carats, within a round brilliant-cut diamond surround, enhanced by baguette-cut diamonds; *signed VCA, no.503H-1; estimated total diamond weight: 2.75 carats; mounted in 18k gold; size 3 1/2*

\$8,000 - 10,000

Accompanied by AGL report # CS 1076395, dated July 06, 2016, stating the emerald as: Zimbabwean (Sandawana) origin, minor traditional clarity enhancement.



39



40



41

PROPERTY OF VARIOUS OWNERS

39^Y

A CORAL NECKLACE

composed of a single strand of graduated coral beads, measuring approximately 18.6 to 8.9mm, with a roped clasp centering a circular coral cabochon; *mounted in 14k gold; length: 20in.*

\$5,000 - 7,000

40

A PERIDOT, FIRE OPAL AND CARNELIAN BROOCH, ATTRIBUTED TO LOUIS COMFORT TIFFANY FOR TIFFANY & CO., CIRCA 1915

of oval form with gold foliate field, centered by a modified rectangular-cut peridot, weighing approximately 3.65 carats, enhanced with fire opal cabochons and carnelian beads; *signed Tiffany & Co., no.L37; accompanied by a signed box; mounted in 18k gold; length: 1 1/2in.*

\$4,000 - 6,000

41

AN ART NOUVEAU PLIQUE-A-JOUR AND GEM-SET PENDANT, MASRIERA, CIRCA 1890

of circular form, centering a female profile within a pique-a-jour frame, adorned with a sculpted gold bonnet with single-cut diamonds, suspending a cultured pearl, accented by calibr -cut sapphires and single and old mine-cut diamonds; *signed Masriera H; accompanied by a signed box; mounted in 18k gold; length: 2 1/2in.*

\$5,000 - 7,000





42



43

42

**AN EGYPTIAN REVIVAL GEM-SET NECKLACE,
MARCUS & CO., CIRCA 1905**

centering a hammered gold scarab with plique-a-jour enamel wings, lapis and carnelian accents, suspended from swags of lapis lazuli, nephrite jade and coral beads, interspersed with hammered gold scarabs, with enamel hieroglyphics on the reverse; *signed Marcus & Co.; gross weight approximately: 67.60 grams; mounted in 18k gold; length: 19in.*

\$30,000 - 50,000

Egypt and all things Egyptian have fascinated artists and designers from the late eighteenth century when, on July 1, 1789, Napoleon landed in Egypt. For the next one hundred and fifty years, this source became an inspirational basis for the arts and decorative arts. By the turn of the twentieth century, many designers were creating jewelry with Egyptian motifs that were set with gemstones reflective of ancient jewelry. This necklace by Marcus & Co. is a superb example.

Exotic Egyptian imagery fascinated the west. One of the most recognizable Egyptian motifs used was the scarab which represented rebirth. The species of beetle depicted on ancient Egyptian amulets and works of art was the sacred scarab (*scarabaeus sacer*) who's young emerged from dung, symbolizing regeneration, transformation, and creation. Furthermore, the winged scarab was used to provide a safe journey into the afterworld, and often found on the breastplate of mummies. Typically, scarabs were decorated on the flat underside with pictures, or hieroglyph, providing a message.

These symbolic elements employed in ancient Egyptian jewelry found their way into the then contemporary designs, remaining popular from the latter part of the nineteenth century to the 1920's following the discovery of Tutankhamun's tomb. The ubiquitous scarab from ancient times found its way into the jewelry of such designers in Paris as Eugène Fontenay and Wièse and, in the United States, Theodore B. Starr and Louis Comfort Tiffany who created jewelry with favrile glass beetles.

Marcus & Company set about to create jewelry using the original or same material found in ancient Egyptian jewelry – gold, turquoise, lapis lazuli and carnelian, as well as utilizing the Egyptian motifs.

With the art nouveau moment drawing inspiration from nature and the female form, one can understand the synergy with the Egyptian influence, causing arousal and popularity at the time.

Marcus & Co. were known for their expert goldsmith and enameling techniques, as well as their ability to design, craft and mount more classical diamond set jewelry. Only a few well established jewelry houses had the confidence to create avant-garde pieces, experimenting with more unusual subject matter. This necklace is a perfect example of their ability to merge the two, creating a stylistic jewel incorporating a multitude of elements and skilled craftsmanship.

43

**AN EGYPTIAN REVIVAL 18K GOLD AND FAIENCE BROOCH,
JULES WIESE, CIRCA 1880**

designed as a winged scarab, the body formed from an oval faience cabochon, with carved gold wings; *signed Wiese; gross weight approximately: 23.10 grams; length: 2 1/4in.*

\$6,000 - 9,000



44

44

AN 18K GOLD AND GEM-SET 'BYZANTINE' RING AND EAR CLIPS, ILIAS LALAOUNIS, GREECE

comprising a ring designed as a textured wide gold band, enhanced with circular-cut rubies, emeralds and sapphires, and a pair of ear clips en suite; *signed Greece, no.A21750, with marker's mark; gross weight approximately: 47.50 grams; earring length: 1 3/4in; ring size 6 1/2*

\$4,000 - 6,000



45

AN 18K GOLD, PLATINUM AND DIAMOND BANGLE BRACELET, DAVID WEBB

designed as a stylized panther, with a round brilliant-cut diamond collar, a mane and paw of similarly cut diamonds, with round brilliant-cut diamond eyes; *estimated total diamond weight: 1.20 carats; gross weight approximately: 65.10 grams; diameter: 2in.*

\$5,000 - 7,000



45

46

AN EMERALD, DIAMOND AND GEMSET BROOCH, DAVID WEBB

of stylized floral motif, centering an oval-shaped emerald cabochon, within a circular dome of round brilliant-cut diamonds, further set with sapphire and ruby cabochons, enhanced by round brilliant-cut diamonds; *signed David Webb, estimated total diamond weight: 9.30 carats; mounted in platinum and 18k gold; diameter: 2 3/4in.*

\$8,000 - 12,000

47

AN 18K GOLD AND DIAMOND NECKLACE, MAPAMENOS NATEPAS

designed as a graduating flexible band composed of brushed Greek coiled motif links, accented at the front with round brilliant-cut diamonds; *signed Mapamenos Natepas, with maker's mark; estimated total diamond weight: 7.95 carats; gross weight approximately: 335.50 grams; length: 18 1/4in.*

\$9,000 - 12,000



46

48

A JADEITE JADE AND 18K RING

set with an oval-shaped jadeite jade cabochon, weighing approximately 7.00 carats; size 9 3/4

\$5,000 - 7,000

Accompanied by Mason-Kay report # 160818-3, dated August 18, 2016, stating the jade as: Natural Jadeite Jade, no dye or polymer detected - 'A' Jade.



47



48



49



(additional view)

PROPERTY OF A PRIVATE HOUSTON COLLECTION

49

A DIAMOND SOLITAIRE RING

set with a marquise brilliant-cut diamond, weighing 5.63 carats, with tapered baguette-cut diamond shoulders; *accompanied by an 18k gold and black enamel jacket; mounted in platinum; size 5*

\$18,000 - 20,000

PROPERTY OF THE JOYCE B. DOHENY TRUST

50

AN 18K GOLD AND ENAMEL BROOCH, DAVID WEBB

designed as a white enamel Maltese cross, enhanced by textured gold detail, centering a white enamel dome, within a hammered gold foliate surround; *signed David Webb; gross weight approximately: 83.00 grams; length: 2 1/2in.*

\$3,000 - 5,000



50



51



52

PROPERTY OF ANOTHER OWNER

51

A CAT'S EYE CHRYSOBERYL AND DIAMOND RING
centering an oval cat's eye chrysoberyl cabochon, weighing approximately 7.15 carats, with two tapered baguette-cut diamonds; mounted in 18k bi-colored gold; size 7 3/4

\$5,000 - 7,000

PROPERTY OF A PHILADELPHIA FAMILY

52

A PAIR OF 18K GOLD AND DIAMOND BANGLE BRACELETS, DAVID WEBB
the hinged bangles of textured gold with bead accents to the terminals, set with round brilliant-cut diamonds; signed Webb; estimated total diamond weight: 2.45 carats; gross weight approximately: 102.60 grams; diameter: 2 1/4in.

\$12,000 - 18,000



53

PROPERTY OF VARIOUS OWNERS

53

**A DIAMOND, COLORED DIAMOND AND CITRINE SUITE,
AMBROSI**

comprising a necklace of "V" shaped design, set with graduated drop shaped citrines, enhanced by a pavé-set round brilliant-cut diamond scroll motif, with a pair of earrings of similar design; *estimated total diamond weight: 50.00 carats; mounted in 18k bi-colored gold; necklace length: 13 1/2in. (adjustable); earring length: 1 1/4in. (colored diamonds untested for origin of color)*

\$15,000 - 20,000



54



55



56



57

54
AN 18K BI-COLORED GOLD, DIAMOND AND GARNET "TRISTAN & ISOLDE" BROOCH, HENRI KASTON AFTER SALVADOR DALI

of circular form, centering a stylized chalice adorned with a garnet cabochon and round brilliant-cut diamonds, flanked by a profile of "Tristan & Isolde"; signed *HK After Dali*; accompanied by a signed box; gross weight approximately: 16.50 grams; length: 1 5/16in.

\$5,000 - 7,000

PROPERTY OF A NEW YORK LADY

55
A DIAMOND AND RUBY BROOCH, BERTINA FOR HAMMERMAN BROS.

of floral design, set with a cushion-shaped ruby stamen, with round brilliant-cut diamond petals and leaves, enhanced by a gold border; signed *HB, Bertina*; estimated total diamond weight: 12.30 carats; mounted in platinum and 18k gold; length: 2 3/8in.

\$6,000 - 8,000

PROPERTY OF AN OREGON PRIVATE COLLECTOR

56
A RUBY AND DIAMOND RING

centering an oval mixed-cut ruby, weighing 8.75 carats, within a round brilliant-cut diamond surround; estimated total diamond weight: 2.80 carats; mounted in platinum and 18k gold; size 7 3/4

\$10,000 - 15,000

Accompanied by AGL report # CS 1079559, dated October 27, 2016, stating the ruby as: Thailand origin, indications of heat and insignificant to minor clarity enhancement.

PROPERTY OF VARIOUS OWNERS

57
A DIAMOND SOLITAIRE RING

centering a round brilliant-cut diamond, weighing 1.80 carats; mounted in 18k gold; size 6 3/4

\$15,000 - 20,000

Accompanied by GIA report # 5172973693, dated October 21, 2016, stating the diamond as: D color, VVS1 clarity.



58



59



60

58

A PAIR OF TURQUOISE AND DIAMOND DAY/NIGHT EARRINGS, CARTIER, FRENCH

set with oval-shaped turquoise cabochons, within a foliate surround of round brilliant-cut diamonds and round-shaped turquoise cabochons, articulated by round brilliant-cut diamonds; *signed Cartier Paris, no.23741, with maker's mark and French assay mark; accompanied by a signed box; estimated total diamond weight: 4.85 carats; mounted in 18k gold; length: 2 1/4in.*

\$15,000 - 25,000

59

AN 18K GOLD, DIAMOND AND SAPPHIRE BROOCH, VAN CLEEF & ARPELS, CIRCA 1960

designed as a stylized flower, centering round brilliant-cut diamonds, within a surround of whimsical gold petals, enhanced by sapphire rims; *signed VCA, no.1K93-1; gross weight approximately: 38.90 grams length: 2 1/4in.*

\$7,000 - 9,000

60

A PAIR OF DIAMOND EARRINGS

of paisley designs, pavé-set with round brilliant-cut diamonds, within twisted rope frames; *unsigned, attributed to Ruser; estimated total diamond weight: 6.50 carats; mounted in platinum and 18k gold; length: 1in.*

\$3,000 - 5,000

PROPERTY OF THE JOYCE B. DOHENY TRUST



61



62

61
**A PAIR OF 18K GOLD AND DIAMOND EAR CLIPS,
VAN CLEEF & ARPELS**
designed as "J"-hoops, pavé-set with round brilliant-cut diamond
centers; signed VCA, no.425H-2; estimated total diamond weight:
2.20 carats; length: 1in.

\$2,000 - 3,000

62
**A COLLECTION OF 18K GOLD AND DIAMOND BRACELETS,
VAN CLEEF & ARPELS**
the three bracelets designed to be joined to form a necklace, each
with oval pavé-set round brilliant-cut diamond links, alternating with
polished gold open oval links; signed VCA, no.377H-1; estimated total
diamond weight: 7.30 carats; length: 6 5/8 (necklace length 20in.)

\$10,000 - 15,000



63

63

A RETRO AQUAMARINE AND DIAMOND BROOCH

centrally set with a cut-cornered rectangular step-cut aquamarine, weighing approximately 58.80 carats, surrounded at one side with curving sprays, terminating in "waves", set with single and round brilliant-cut diamonds; *estimated total diamond weight: 1.55 carats; mounted in platinum and 14k gold; length: 2 3/4in.*

\$2,500 - 3,500

PROPERTY OF ANOTHER OWNER

64

AN AQUAMARINE AND DIAMOND RING, BUCCELLATI, ITALIAN

centering a fancy shaped aquamarine, measuring approximately 20.35 x 12.70 x 8.40, within an openwork surround, enhanced by round brilliant-cut diamonds; *signed Gianmaria Buccellati, Italy; estimated total diamond weight: 1.00 carat; mounted in 18k bi-colored gold; size 8*

\$8,000 - 12,000

PROPERTY OF THE JOYCE B. DOHENY TRUST



64

65

A DIAMOND RING, RUSER

the high domed mount, set with round brilliant-cut diamonds, within a raised textured gold border and mount; *estimated total diamond weight: 4.25 carats; mounted in platinum and 18k gold; size 3 3/4*

\$3,500 - 4,500

PROPERTY OF ANOTHER OWNER

66

AN 18K GOLD "ALHAMBRA" NECKLACE, VAN CLEEF & ARPELS, 1998

comprised of sixteen articulated gold "Alhambra" links; *weight approximately: 177.00 grams; length: 16 1/8*

\$15,000 - 20,000

PROPERTY OF THE JOYCE B. DOHENY TRUST

67

AN AQUAMARINE AND DIAMOND RING, RUSER

centering a rectangular step-cut aquamarine, weighing approximately 33.30 carats, set within a basket of sculpted convex octopus arms, alternating with pavé-set round brilliant-cut diamonds; *signed Ruser; estimated total diamond weight: 2.05 carats; mounted in 18k gold and platinum; size 2 3/4*

\$2,000 - 4,000



65

(side view)



66



(side view)



67



(side view)



68



69

PROPERTY OF ANOTHER OWNER

68

A TURQUOISE, DIAMOND AND SAPPHIRE FLOWER BROOCH

designed as a stylized flower, centrally set with round sapphire pistils, with turquoise cabochon petals, enhanced with round brilliant-cut diamonds; *estimated total diamond weight: 7.00 carat; mounted in 18k bi-colored gold; diameter: 2 1/4in.*

\$5,000 - 7,000

PROPERTY OF A ROYAL FAMILY

69

A LADY'S DIAMOND AND SAPPHIRE WRISTWATCH, PIAGET,

set with four sapphire numerals, within a round brilliant-cut diamond bezel, to a similarly cut diamond articulated strap, enhanced by square step-cut sapphires, quartz movement; *dial and clasp signed Piaget, no. 411280 and no.8952; with maker's mark and Swiss assay mark; estimated total diamond weight: 14.50 carats; mounted in 18k gold; length: 6 1/2in.*

\$5,000 - 7,000

PROPERTY OF ANOTHER OWNER

70
A CULTURED PEARL, SAPPHIRE, TOURMALINE, DIAMOND AND ONYX "PAULINE" TORQUE COLLAR, MARINA B, FRENCH

designed as a tapered sprung collar, set to the front with a cushion-shaped sapphire, weighing 14.87 carats, between fancy-shaped pink tourmaline, and similarly shaped onyx accents, highlighted with pavé-set round brilliant-cut diamonds, completed by four rows of cultured pearls measuring approximately 4.8 to 4.4mm; *signed Marina B, with maker's mark and French assay marks; estimated total diamond weight: 11.30 carats; diameter: 6in.*

\$25,000 - 35,000

PROPERTY OF THE JOYCE B. DOHENY TRUST

71
A CULTURED PEARL AND DIAMOND RING, VAN CLEEF & ARPELS

centering a cultured pearl, measuring approximately 13.1mm, within a fluted pavé-set round brilliant-cut diamond mounting; *signed VCA, no.no.653H-3; estimated total diamond weight: 2.50 carats; mounted in 18k gold; size 3 1/2*

\$2,000 - 3,000

PROPERTY OF A MIDWEST FAMILY

72
A STAR SAPPHIRE RING

centering an oval-shaped star sapphire cabochon, weighing 19.10 carats, within a gold wire mount; *signed Boucheron; mounted in 18k gold; size 6*

\$7,000 - 9,000

Accompanied by AGL report # CS 1075273, dated May 10, 2016, stating the sapphire as: origin not determinable with a high enough degree of certainty, no indications of heat or clarity enhancement.





PROPERTY OF VARIOUS OWNERS

73

A CULTURED PEARL AND DIAMOND SUITE

comprising a necklace of graduated fringe design, suspending nineteen cultured pearls, measuring approximately 15.7 to 12.2mm, surmounted by round brilliant-cut diamond links, and a pair of matching pendant earrings, each suspending a cultured pearl measuring approximately 15.1mm; *estimated total diamond weight: 42.00 carats; mounted in 18k gold; necklace length: 18 1/4in.; earring length: 2in. (two diamonds deficient)*

\$15,000 - 25,000



74

74

A RUBY, DIAMOND, TIGER'S-EYE AND NATURAL PEARL OWL BROOCH, CARVIN FRENCH

the body set with a natural pearl, measuring approximately 10.3mm, the eyes with circular tiger's-eye cabochons, enhanced by round brilliant-cut diamonds, perching atop a branch, with calibré-cut ruby detail feathers; *estimated total diamond weight: 1.15 carats; mounted in 18k gold; length: 1 3/4in.*

\$10,000 - 15,000

Accompanied by GIA report # 2171984502, dated October 26, 2016, stating the pearl as: natural saltwater, no indications of treatment.



75

PROPERTY OF THE JOYCE B. DOHENY TRUST

75

A PAIR OF CULTURED PEARL AND DIAMOND EAR CLIPS, VAN CLEEF & ARPELS

centering cultured pearls, measuring approximately 12.0 and 11.6mm; within a double surround of collet-set round brilliant-cut diamonds; *signed VCA, no. 723H-2; estimated total diamond weight: 8.80 carats; mounted in 18k gold; length: 1 1/8in.*

\$3,000 - 5,000



76

PROPERTY OF ANOTHER OWNER

76

A PAIR OF SAPPHIRE, RUBY, DIAMOND AND 18K GOLD "PELOUSE HAWAII" EAR CLIPS, VAN CLEEF & ARPELS

of bombé design, composed of polished gold spheres, accented with round brilliant-cut diamond, sapphire and ruby flowerhead motifs; *signed Van Cleef & Arpels, no. 60804; length: 7/8in.*

\$15,000 - 20,000

PROPERTY OF THE JOYCE B. DOHENY TRUST

77

A FRESHWATER PEARL, DIAMOND AND EMERALD BROOCH, RUSER

designed as a kangaroo with "baby joey", ears set with two pear and two marquise brilliant-cut diamonds, accented by circular emerald eyes, enhanced by a round brilliant-cut diamond collar, with a freshwater pearl pouch; *signed Ruser; gross weight approximately: 22.30 grams; mounted in platinum and 18k gold; length: 1 3/4in.*

\$1,000 - 2,000



77



78



79



80

PROPERTY OF VARIOUS OWNERS

78
AN "ALHAMBRA" 18K GOLD AND DIAMOND BRACELET, VAN CLEEF & ARPEL, FRENCH

the fine link chain set with five quatrefoil round brilliant-cut diamond tablets; *signed VCA, no.BL227722 with French assay mark; accompanied by a signed pouch; estimated total diamond weight: 1.80 carats; length: 7 1/2in.*

\$10,000 - 15,000

Accompanied by a certificate of authenticity from Van Cleef & Arpels, dated August 12, 2008.

79^Y
A PAIR OF "MAGIC ALHAMBRA" MOTHER-OF-PEARL PENDANT EARRINGS, VAN CLEEF & ARPELS, FRENCH

each comprised of three quatrefoils of various sizes, formed from white mother-of-pearl connected by trace-link chains; *signed VCA, no.BL121683, with maker's mark and French assay mark; accompanied by a signed pouch; mounted in 18k gold; length: 3in.*

\$5,000 - 7,000

Accompanied by a certificate of authenticity from Van Cleef & Arpels, dated October 24, 2009.

80
A COLORED DIAMOND AND DIAMOND BUTTERFLY RING, VAN CLEEF & ARPELS

designed as two butterflies, centrally set with marquise brilliant-cut diamonds, with round brilliant-cut fancy colored and colorless diamonds; *signed VCA, no.BL17480; mounted in 18k bi-colored gold; size 5 1/4 (colored diamonds untested for origin of color)*

\$6,000 - 8,000

81
AN "ALHAMBRA" ONYX NECKLACE, VAN CLEEF & ARPELS, FRENCH

the fine link chain set with twenty quatrefoil black onyx tablets; *signed VCA, no.CL112168, with French assay mark; accompanied by a signed pouch; mounted in 18k gold; length: 34 1/4in.*

\$8,000 - 12,000

Accompanied by a certificate of authenticity Van Cleef & Arpels, dated November 10, 2008.

82
A DIAMOND SOLITAIRE RING

centering a pear brilliant-cut diamond, weighing 3.84 carats, to a broad plain hoop; *mounted in 18k gold; size 8 1/2*

\$25,000 - 35,000

Accompanied by GIA report # 1172630793, dated May 12, 2016, stating the diamond as: G color, VS1 clarity.



83

**AN "ALHAMBRA" LAPIS LAZULI NECKLACE,
VAN CLEEF & ARPELS, FRENCH, 1989**

the fine link chain set with twenty quatrefoil lapis lazuli tablets; *signed VCA, no.4K855-93, with French assay mark; accompanied by a signed pouch; mounted in 18k gold; length: 34 1/4in.*

\$10,000 - 15,000

Accompanied by a certificate of authenticity Van Cleef & Arpels, dated April 27, 2015.

84^Y

AN "ALHAMBRA" CORAL NECKLACE, VAN CLEEF & ARPELS

the fine link chain set with twenty quatrefoil coral tablets; *signed VCA, France no.4V.258.304 with marker's mark and French assay mark; accompanied by a signed pouch; mounted in 18k gold; length: 34in.*

\$10,000 - 15,000

Accompanied by a VC&A certificate of insurance replacement estimate, dated May 09, 1989.

85

**AN 18K GOLD "ALHAMBRA" NECKLACE,
VAN CLEEF & ARPELS, FRENCH**

designed as a cable chain, set with twenty quatrefoil textured gold motif tablets; *signed VCA, no.JB385416, with French assay mark; weight approximately: 69.10 grams; length: 33in.*

\$8,000 - 12,000

Accompanied by a certificate of authenticity Van Cleef & Arpels, dated December 22, 2013.

86

**A PAIR OF "ALHAMBRA" 18K GOLD AND DIAMOND
EARRINGS, VAN CLEEF & ARPELS, FRENCH**

designed as quatrefoil round brilliant-cut diamond tablets; *signed VCA, no.CU1575, with maker's mark and French assay mark; diameter: 7/8in.*

\$8,000 - 12,000

Accompanied by a certificate of authenticity from Van Cleef & Arpels, dated July 13, 2007.



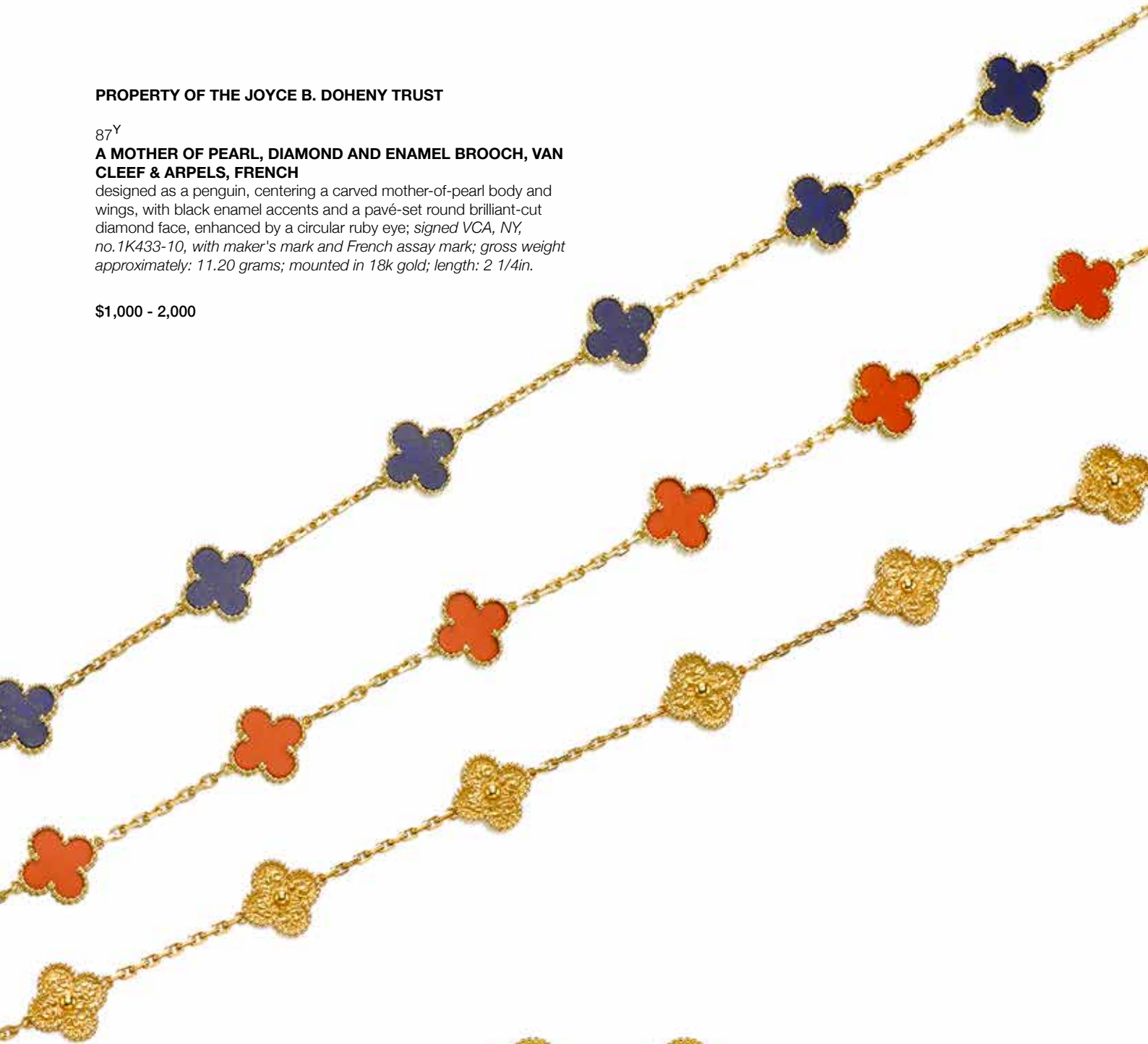
PROPERTY OF THE JOYCE B. DOHENY TRUST

87^Y

A MOTHER OF PEARL, DIAMOND AND ENAMEL BROOCH, VAN CLEEF & ARPELS, FRENCH

designed as a penguin, centering a carved mother-of-pearl body and wings, with black enamel accents and a pavé-set round brilliant-cut diamond face, enhanced by a circular ruby eye; *signed VCA, NY, no. 1K433-10, with maker's mark and French assay mark; gross weight approximately: 11.20 grams; mounted in 18k gold; length: 2 1/4 in.*

\$1,000 - 2,000



86



87



88

PROPERTY OF ANOTHER OWNER

88
A DIAMOND AND 18K GOLD BROOCH/PENDANT NECKLACE, VAN CLEEF & ARPELS

centering a sculpted lion's head, grasping a ring in its mouth, enhanced by round brilliant-cut diamonds, suspended by an open oval link chain; *signed VCA, no.4H3315; estimated total diamond weight: 1.05 carats; length: 32in.*

\$12,000 - 18,000

PROPERTY OF THE JOYCE B. DOHENY TRUST

89
A PAIR OF EMERALD AND DIAMOND EAR CLIPS, VAN CLEEF & ARPELS

each oval frame centers an oval-shaped emerald cabochon, weighing approximately 3.40 and 3.85 carats, enhanced by two passing rows of round brilliant-cut diamonds; *signed VCA, no.487H-3; estimated total diamond weight: 1.55 carats; mounted in 18k gold; length: 1in.*

\$1,500 - 2,500



89



90

90
AN EMERALD, DIAMOND AND RUBY BROOCH, VAN CLEEF & ARPELS
 designed as a phoenix, with open articulated wings and tail, the body centrally-set with a pear-shaped ruby cabochon, set throughout with pear and circular emerald cabochons and round brilliant-cut diamonds, enhanced by a pear-shaped ruby eye; *signed V.C.A., no.NY41348; estimated total diamond weight: 4.20 carats; mounted in 18k gold; length: 3 1/2in.*

\$4,000 - 6,000

91
A PAIR 18K GOLD AND EMERALD EAR CLIPS, VAN CLEEF & ARPELS
 designed as sculpted lion heads, suspending a textured ring, enhanced by two emerald eyes; *signed VCA; gross weight approximately: 36.20 grams; length: 1 1/2in.*

\$1,500 - 2,500



91



92

92
A DIAMOND BANGLE BRACELET, VAN CLEEF & ARPELS
 comprised of pavé-set round brilliant-cut diamonds, centrally set within interwoven sections across the domed front; *signed VCA, no.863H-2; estimated total diamond weight: 4.15 carats; mounted in 18k gold; diameter: 1 7/8in.*

\$3,000 - 5,000

PROPERTY OF ANOTHER OWNER

93
A DIAMOND, EMERALD AND ONYX "PANTHER" RING, CARTIER, FRENCH
 designed as a pavé-set round brilliant-cut diamond panther, with emerald eyes and onyx nose; *signed Cartier, no.48654C, with makers mark and French assay mark; accompanied by a signed box; estimated total diamond weight: 2.40 carats; mounted in 18k gold; size 6 1/4*

\$20,000 - 30,000



93



94

PROPERTY OF THE JOYCE B. DOHENY TRUST

94

A PAIR OF YELLOW SAPPHIRE AND DIAMOND DAY/NIGHT EAR CLIPS, VAN CLEEF & ARPELS

set with oval modified mixed-cut yellow sapphires, weighing 10.99 and 11.54 carats, within a double surround of round brilliant-cut diamonds, extending oval mixed-cut yellow sapphires, weighing 12.75 and 11.41 carats, from a pear-shaped double row surround of round brilliant-cut diamonds; *signed Van Cleef & Arpels N.Y., no.45951, with maker's mark; estimated total diamond weight: 16.20 carats; mounted in 14k gold; length: 2 1/2in.*

\$8,000 - 10,000

Accompanied by AGL report # CS 1077097 A and B, dated July 28, 2016, stating the yellow sapphires as: Ceylon (Sri Lanka) origin, no indications of heat or clarity enhancement.



95

95

A YELLOW SAPPHIRE AND DIAMOND BROOCH, VAN CLEEF & ARPELS

designed as a "sun" motif, centering a cushion mixed-cut yellow sapphire, weighing approximately 11.50 carats, surrounded by round brilliant-cut diamond "rays"; *signed VCA, no. CS02911; estimated total diamond weight: 2.00 carats; mounted in 18k gold; length: 1 5/8in.*

\$2,500 - 3,500



96

96

A PAIR OF DIAMOND BRACELETS, RUSER

with round brilliant-cut diamonds set in navette and triangular platinum links, with twisted roped borders; *signed Ruser; estimated total diamond weight: 30.00 carats; mounted in platinum and 18k gold; length: 7 1/2in.*

\$6,000 - 8,000



97

A DIAMOND NECKLACE, RUSER

with round brilliant-cut diamonds set in navette and triangular platinum links across the center, with twisted roped borders and navette patterning extending to the tapered back; *signed Ruser*; *estimated total diamond weight: 12.00 carats*; *mounted in platinum and 18k gold*; *length: 15 1/4in.*

97

\$4,000 - 6,000

98

A PAIR 18K GOLD AND EMERALD EAR CLIPS, VAN CLEEF & ARPELS

designed as sculpted lion heads, suspending a textured ring, enhanced by two emerald eyes; *signed VCA, no.3H26-6*; *gross weight approximately: 39.60 grams*; *length: 1 5/8in.*

\$1,500 - 2,500

99

A YELLOW SAPPHIRE AND DIAMOND RING, VAN CLEEF & ARPELS

centering an oval mixed-cut yellow sapphire, weighing 18.17 carats, within a double surround of round brilliant-cut diamonds, to a split shank of similarly cut diamonds; *signed VCA, no.221H-7*; *estimated total diamond weight: 6.00 carats*; *mounted in 18k gold*; *size 3 1/4*

\$5,000 - 8,000

Accompanied by AGL report # CS 1076394, dated July 06, 2016, stating the sapphire as: Ceylon (Sri Lanka) origin, no indications of heat or clarity enhancement.



98



99



100



101



102

PROPERTY OF VARIOUS OWNERS

**100
A FANCY COLORED DIAMOND AND
DIAMOND PENDANT WITH CHAIN**

centering a fancy light brownish-yellow pear modified brilliant-cut diamond, weighing 3.00 carats, within a double row of round brilliant-cut diamonds; *pendant mounted in platinum and 18k gold; length with pendant: 19 1/8in.*

\$5,000 - 7,000

Accompanied by GIA report # 5172497424, dated February 24, 2016, stating the diamond as: Natural, Fancy Light Brownish Yellow color, SI2 clarity.

**101
A COLORED DIAMOND AND
DIAMOND RING**

centering a cut-cornered rectangular modified brilliant-cut diamond, weighing 5.09 carats, within a round brilliant-cut diamond surround, with split shank shoulders; *mounted in platinum and 18k gold; size 5 1/2*

\$20,000 - 30,000

Accompanied by GIA report # 2171492892, dated February 18, 2016, stating the diamond as: W to X Range color, VVS1 clarity.

**102
A FANCY COLORED DIAMOND AND
DIAMOND RING**

bezel set with an oval modified brilliant-cut fancy yellow diamond, weighing 3.50 carats, within a round brilliant-cut diamond surround, with a similarly cut diamond split shank; *mounted in platinum and 18k gold; size 5 3/4*

\$15,000 - 20,000

Accompanied by GIA report # 16431722, dated December 14, 2007, stating the diamond as: Fancy Light Yellow color.



103



104



105

PROPERTY OF A ROYAL FAMILY

103

A GOLD AND DIAMOND BROOCH

designed as a starfish, centering a round brilliant-cut diamond, weighing 12.97 carats, with pavé-set round brilliant-cut diamonds; *estimated remaining diamond weight: 3.30 carats; gross weight approximately: 56.80 grams; mounted in 18k and 22k white gold; diameter: 3in.*

\$20,000 - 30,000

PROPERTY OF VARIOUS OWNERS

104

A FANCY COLORED DIAMOND AND DIAMOND BRACELET

set with rectangular mixed-cut colored diamonds, weighing a total of 24.67 carats, within a round brilliant-cut diamond surround; *estimated remaining diamond weight: 3.75 carats; mounted in platinum and 18k white gold; length: 7in. (colored diamonds untested for origin of color)*

\$85,000 - 95,000

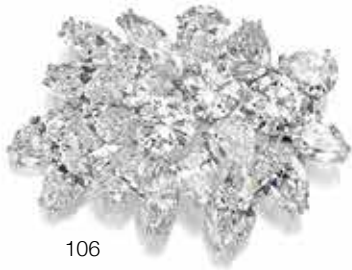
105

A FANCY COLORED DIAMOND AND DIAMOND RING

centering a cut-cornered rectangular modified brilliant-cut diamond, weighing 2.63 carats, flanked either side by trapezoid-shaped diamonds; *mounted in 18k gold; size 3 3/4*

\$6,000 - 8,000

Accompanied by GIA report # 6177946317, dated October 17, 2016, stating the diamond as: Fancy Light Yellow color, SI1 clarity.



106



107

PROPERTY OF THE JOYCE B. DOHENY TRUST

106

A DIAMOND BROOCH

designed as a cluster of marquise, pear and round brilliant-cut diamonds; *unsigned, attributed to Ruser; total diamond weight: 24.31 carats; mounted in platinum; length: 1 3/4in.*

\$50,000 - 70,000

PROPERTY OF VARIOUS OWNERS

107

A DIAMOND BROOCH, DAVID WEBB

designed as a flower, set with round brilliant-cut diamonds; *signed Webb, no. GA62, with maker's mark; accompanied by a signed box; estimated total diamond weight: 22.00 carats; mounted in platinum; diameter: 2 5/8in.*

\$20,000 - 30,000

Accompanied by a David Webb letter of authentication, dated September 01, 2016.

108

A CULTURED PEARL AND DIAMOND NECKLACE

composed of two graduated lines of gradient colored cultured pearls, measuring approximately 14.9 to 10.0mm, completed by a round brilliant-cut diamond clasp; *estimated total diamond weight: 1.80 carat; mounted in 18k white gold; length of shortest strand: 17in.; (gray pearls not tested for origin of color)*

\$18,000 - 25,000

PROPERTY SOLD TO BENEFIT A NEW YORK FOUNDATION

109

A DIAMOND SOLITAIRE RING

centering a marquise brilliant-cut diamond, weighing 11.93 carats, flanked with baguette-cut diamond shoulders; *mounted in 14k white gold; size 6*

\$50,000 - 70,000

Accompanied by GIA report # 2175905303, dated September 27, 2016, stating the diamond as: I color, SI1 clarity.



108

109



110

PROPERTY OF ANOTHER OWNER

110

A COLORED DIAMOND, EMERALD AND DIAMOND RING

of crossover design, set with a shield step-cut fancy intense yellow diamond, weighing 2.73 carats, set underneath with a round brilliant-cut diamond, and a shield step-cut emerald, weighing approximately 2.50 carats, the shoulders set with baguette-cut diamonds; *mounted in platinum and 18k gold; size 3 1/2*

\$15,000 - 20,000

Accompanied by GIA report # 10089056, dated March 17, 2016, stating the colored diamond as: Fancy Intense Yellow color, SI1 clarity.

PROPERTY OF THE JOYCE B. DOHENY TRUST

111

A JADEITE JADE, DIAMOND AND ONYX BROOCH, RUSER

designed as a parrot, the body centering an oval jadeite jade cabochon, measuring approximately 20.3 x 13.4 x 3.2mm, set throughout with single and round brilliant-cut diamonds, enhanced by a black onyx bead eye; *signed Ruser; estimated total diamond weight: 2.40 carats; mounted in platinum and 18k gold; length: 2 1/4in.*

\$3,000 - 5,000

Accompanied by Mason-Kay report # 160616-1, dated June 16, 2016, stating the jade as: Natural Jadeite Jade, no dye or polymer detected - 'A' Jade.



111



112

PROPERTY OF ANOTHER OWNER

112

A PAIR OF YELLOW SAPPHIRE AND DIAMOND PENDANT EARRINGS

centrally set with oval mixed-cut sapphires, weighing a total of 8.34 carats, within a pavé-set round brilliant-cut diamond surround; *estimated total diamond weight: 1.25 carats; mounted in platinum and 18k white; length: 1 7/8in.*

\$4,500 - 6,500

PROPERTY OF THE JOYCE B. DOHENY TRUST

113

A PAIR OF JADEITE JADE AND DIAMOND EAR CLIPS

centering oval-shaped jadeite jade cabochons, measuring 14.4 x 10.3 x 2.9mm and 16.7 x 11.8 x 4.5mm in one earring, and 14.3 x 9.9 x 2.5mm and 17.7 x 12.3 x 4.2mm in the other, partially framed with round brilliant-cut diamonds, joined by a similarly cut diamond at the center; *unsigned, attributed to Ruser; estimated total diamond weight: 3.35 carats; mounted in platinum; length: 1 3/4in.*

\$5,000 - 8,000

Accompanied by Mason-Kay report # 160616-2, dated June 16, 2016, stating the jade as: Natural Jadeite Jade, no dye or polymer detected - 'A' Jade.



113



114



115

PROPERTY OF A ROYAL FAMILY

114

A CULTURED PEARL AND DIAMOND NECKLACE

designed as a graduated single strand of gray cultured pearls, measuring approximately 14.1 to 11.2mm, enhanced by a pavé-set round brilliant-cut diamond clasp; *estimated total diamond weight: 2.00 carats; mounted in 14k white gold; length: 17 1/2in.*

\$2,000 - 3,000

PROPERTY OF VARIOUS OWNERS

115

A CULTURED PEARL AND DIAMOND RING, RUSER

centering a round cultured pearl, measuring approximately 13.6mm, within a marquise brilliant-cut diamond surround, enhanced by a pavé-set round brilliant-cut diamond split shank; *signed Ruser; estimated total diamond weight: 6.40 carats; mounted in platinum; size 5 1/2*

\$5,000 - 7,000



116



117



118

**PROPERTY OF A NEW YORK
PRIVATE COLLECTION**

116

A DIAMOND BROOCH

centering a round brilliant-cut diamond, weighing 1.45 carats, within a foliate surround of round brilliant and baguette-cut diamonds; *estimated total diamond weight: 6.00 carats; mounted in platinum; length: 2in.*

\$6,000 - 8,000

117

**AN EMERALD AND DIAMOND
BRACELET, CARTIER**

styled as four openwork panels with marquise brilliant-cut diamond foliate design, adjoined with baguette-cut diamond links, enhanced with prong-set oval-cut emeralds, within a baguette-cut diamond surround, joined by a baguette-cut diamond-set clasp; *signed Cartier; estimated total diamond weight: 11.90 carats; mounted in platinum and 18k gold; length: 7in.*

\$18,000 - 25,000

118

A DIAMOND RING

centering a round brilliant-cut diamond, weighing 3.68 carats, within a scrolled frame of baguette-cut diamonds; *estimated remaining diamond weight: 1.15 carats; mounted in platinum; size 3 1/2*

\$8,000 - 12,000



119



120



121

**PROPERTY OF THE JOYCE
B. DOHENY TRUST**

119
**A PAIR OF DIAMOND EAR PENDANTS,
RUSER**

set as a cluster motif of marquise and round brilliant-cut diamonds, suspending two pear brilliant-cut diamonds, weighing 1.69 and 1.60 carats; *signed Ruser; estimated remaining diamond weight: 6.35 carats; mounted in platinum; length: 1 1/4in.*

\$12,000 - 18,000

PROPERTY OF A ROYAL FAMILY

120
**A PAIR OF CULTURED PEARL AND
DIAMOND PENDANT EARRINGS**

set with round cultured pearls, measuring approximately 13.7 and 13.3mm, within a round brilliant-cut diamond surround, suspending an articulated line of round brilliant-cut diamonds, terminating with pear-shaped diamonds, weighing 5.48 and 5.02 carats; *estimated remaining diamond weight: 2.50 carats; mounted in 14k and 18k white gold; length: 2in.*

\$15,000 - 25,000

PROPERTY OF VARIOUS OWNERS

121
A SPINEL AND DIAMOND BRACELET
designed as a graduated line of oval-shaped spinels, set between two rows of round brilliant-cut diamonds; *estimated total diamond weight: 11.10 carats; mounted in platinum; length: 6 3/4in.*

\$30,000 - 50,000



122



123



124

122

A DIAMOND NECKLACE

designed as an openwork lattice of round brilliant-cut diamond clusters, within a diamond surround, centrally enhanced with six suspending pear-shaped clusters of similarly cut diamonds; *estimated total diamond weight: 86.70 carats; mounted in 18k white gold; length: 12 3/4in. (not including extension)*

\$12,000 - 18,000

123

AN EMERALD AND DIAMOND RING

centering an oval-shaped emerald cabochon, weighing 16.43 carats, within a round brilliant-cut diamond surround; *stamped no.28259; estimated total diamond weight: 3.50 carats; mounted in platinum and 18k gold; size 5 1/2*

\$10,000 - 15,000

Accompanied by AGL report # CS 1079265, dated October 21, 2016, stating the emerald as: Colombian origin, indications of minor traditional clarity enhancement.

124

AN EMERALD AND DIAMOND RING

centering an oval modified brilliant-cut emerald, weighing 23.46 carats, within a surround of rose-cut diamonds, enhanced by circular-cut emeralds, with round brilliant-cut diamond shoulders: *total diamond weight: 3.03 carats; mounted in 18k white gold; size 8 3/4*

\$8,000 - 12,000

Accompanied by AGL report # CS 1079266, dated October 21, 2016, stating the emerald as: Colombian origin, indications of minor modern clarity and modern minor in-filling enhancement.



125

125

A SAPPHIRE AND DIAMOND RING

centering a cushion mixed-cut sapphire, weighing 12.23 carats, flanked by two trapezoid-shaped diamonds; *estimated total diamond weight: 1.10 carats; mounted in platinum; size: 5 3/4*

\$40,000 - 60,000

Accompanied by AGL report # CS 71124, dated October 28, 2015, stating the sapphire as: Ceylon (Sri Lanka) origin, no indications of heat or clarity enhancement.

Accompanied by a copy of GIA report # 2141948569, dated September 03, 2015, stating the sapphire as: Burma (Myanmar) origin, no indications of heating.

126^Y

A "MAGIC ALHAMBRA" MOTHER-OF-PEARL AND CHALCEDONY NECKLACE, VAN CLEEF & ARPELS, FRENCH

comprised of sixteen quatrefoils of various sizes, formed from gray and white mother-of-pearl and banded chalcedony, connected by trace-link chains; *signed VCA, no.BL228482, with maker's mark and French assay mark; mounted in 18k white gold; length: 48in.*

\$10,000 - 15,000

Accompanied by a certificate of authenticity Van Cleef & Arpels, dated July 14, 2008.

127

A CULTURED PEARL AND DIAMOND "HIMALIA" PENDANT, CARTIER

set with a cultured pearl, measuring approximately 10.8mm, suspended from a brilliant-cut diamond-set circlet, to a 7.2mm cultured pearl, suspended from a similarly designed circlet, with a trace-link chain enhanced by round brilliant-cut diamonds; *signed Cartier, no.OJ9970, with maker's mark; estimated total diamond weight: 1.10 carats; mounted in 18k white gold; length: 16in.*

\$6,000 - 9,000



128

AN 18K WHITE GOLD "LOVE" BRACELET WITH SCREW DRIVER, ALDO CIPULLO FOR CARTIER, 1970

designed as two arches, set throughout with screw head motifs; *signed Cartier 1970, Aldo Cipullo; accompanied by screwdriver and a signed pouch; weight of bracelet approximately: 30.30 grams; diameter: 2 1/2in.*

\$5,000 - 7,000

129

A SAPPHIRE AND DIAMOND CLUSTER RING, ALEXANDRE LAUT

centering an oval mixed-cut sapphire, weighing 12.50 carats, within a round brilliant-cut diamond surround; *signed Laut, no.7324; estimated total diamond weight: 2.70 carats; mounted in platinum; size 7*

\$35,000 - 55,000

Accompanied by AGL report # CS 50782, dated July 25, 2012, stating the sapphire as: Burma (Myanmar) origin, no indications of heat or clarity enhancement.



126



127



128



129



130



131



132



133

PROPERTY OF AN OREGON PRIVATE COLLECTOR

130

A DIAMOND BROOCH, MELLERIO, FRENCH

of stylized openwork leaf design, centrally set with old European-cut diamonds, weighing 1.13 and 1.09 carats, set throughout with baguette, old European and round brilliant-cut diamonds; *signed Mellerio, Paris, no.C10.899, with French assay mark; estimated remaining diamond weight: 12.75 carats; mounted in platinum; length: 3 1/8in.*

\$7,000 - 9,000

PROPERTY OF A MIDWEST FAMILY

131

A DIAMOND BROOCH, OSCAR HEYMAN & BROTHERS, CIRCA 1950

of stylized flower spray design, the stems set with baguette-cut diamonds terminating with a round brilliant-cut diamond, the ribbon tie set with similarly cut diamonds; *signed with maker's mark; estimated total diamond weight: 10.50 carats; mounted in platinum and 18k white gold; length: 2 3/4in.*

\$10,000 - 15,000

PROPERTY OF A NEW YORK PRIVATE COLLECTION

132

A PAIR OF DIAMOND DOUBLE CLIP BROOCHES

each of scrolling foliate design, comprised of round brilliant-cut diamonds, accented by baguette-cut diamond edges; *estimated total diamond weight: 16.30 carats; mounted in platinum; length: 2 5/8in.*

\$15,000 - 25,000

PROPERTY OF AN OREGON PRIVATE COLLECTOR

133

A STAR SAPPHIRE AND DIAMOND RING

centering a purple star sapphire cabochon, weighing approximately 46.90 carats, flanked either side by a semi-scroll of baguette-cut diamonds; *mounted in platinum; size 6 1/4*

\$18,000 - 25,000

Accompanied by AGL report # CS 1079523, dated October 31, 2016, stating the purple sapphire as: Ceylon (Sri Lanka) origin, no indications of heat or clarity enhancement.

PROPERTY OF ANOTHER OWNER

134

A LADY'S DIAMOND "SHUTTER" BRACELET WATCH, VAN CLEEF & ARPELS, CIRCA 1940

a manual winding seventeen-jeweled movement, signed Piaget, the articulated brick-link strap with two central hidden shutter clasps, of geometric design, opening to reveal a rectangular watch face with squared silver tone dial and raised geometric numerals, bordered by baguette step-cut diamond accents and pavé-set with round brilliant-cut diamond crescents; *signed Van Cleef & Arpels, NY, no.10363; accompanied by a signed pouch; estimated total diamond weight: 1.55 carats; mounted in platinum; length: 7 9/16in.*

\$12,000 - 18,000



134



(detail view)



PROPERTY OF A ROYAL FAMILY

135

A SAPPHIRE AND DIAMOND PENDANT NECKLACE

of graduated line design, set with round brilliant-cut diamonds, adorned with a detachable pendant centering an oval mixed-cut sapphire, weighing 25.26 carats, within a round brilliant-cut diamond surround; *estimated total diamond weight: 27.80 carats; mounted in platinum; necklace length: 15 3/4in.*

\$80,000 - 120,000

Accompanied by AGL report # CS 1078738, dated October 12, 2016, stating the sapphire as: Ceylon (Sri Lanka) origin, no indications of heat or clarity enhancement.





136



137

PROPERTY OF VARIOUS OWNERS

136

A SAPPHIRE AND DIAMOND RING

centering a rectangular emerald-cut sapphire, weighing 11.10 carats, enhanced with two trapezoid step-cut diamonds; *mounted in platinum; size 6 1/2*

\$65,000 - 85,000

Accompanied by AGL report # CS 85456, dated June 20, 2016, stating the sapphire as: Burma (Myanmar) origin, no indications of heat or clarity enhancement.

137

A RUBELLITE AND DIAMOND RING

centering an oval mixed-cut rubellite, weighing 9.52 carats, within a surround of marquise and round brilliant-cut diamonds of floral design, with similarly cut diamond shoulders; *estimated total diamond weight: 2.20 carats; mounted in 18k white gold; size 6 1/4*

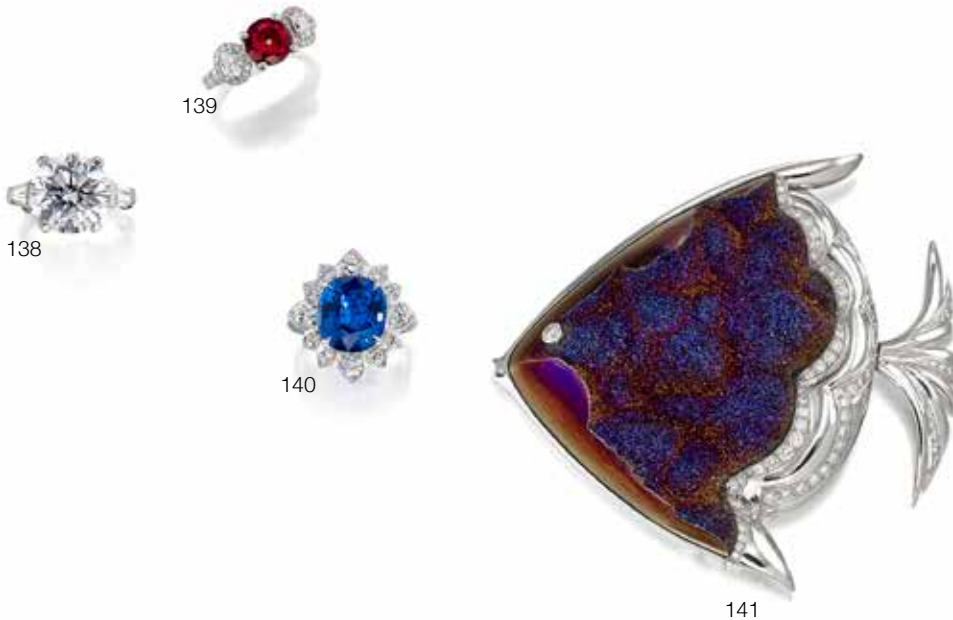
\$8,000 - 12,000

138

A DIAMOND SOLITARE RING

centering a round brilliant-cut diamond, weighing 8.48 carats, with tapered baguette-cut diamond shoulders; *mounted in platinum; size 4 1/2*

\$10,000 - 15,000



138

139

140

141

PROPERTY OF A LADY

139

A RUBY AND DIAMOND RING

centering a round mixed-cut ruby, weighing 2.57 carats, surmounted by a round brilliant-cut diamond, flanked by two oval brilliant-cut diamonds, each within a round brilliant-cut diamond frame, with similarly cut diamond shoulders; *mounted in 18k white gold; size 6 1/2*

\$20,000 - 30,000

Accompanied by AGL report # CS 1078741, dated October 12, 2016, stating the ruby as: Classic Burma (Myanmar) origin, no indications of heat or clarity enhancement.

Accompanied by C. Dunaigre report # CDC 1511781, dated November 23, 2015, stating the ruby as: Burma (Myanmar) origin, no indications of heating.

140

A SAPPHIRE AND DIAMOND RING

centering an oval mixed-cut sapphire, weighing 9.60 carats, within a round brilliant cut diamond surround of floral design; *estimated total diamond weight: 1.05 carats; mounted in platinum; size 6 3/4*

\$10,000 - 15,000

Accompanied by AGL report # CS 65153, dated December 15, 2014, stating the sapphire as: Ceylon (Sri Lanka) origin, indications of heat.

PROPERTY OF VARIOUS OWNERS

141

A TITANIA DRUSY QUARTZ AND DIAMOND BROOCH, MAUBOUSSIN, FRENCH

designed as a titania drusy quartz fish, with polished gold flexible tail, enhanced by round brilliant diamonds; *signed Mauboussin, Paris, no.A5868, with French assay mark; estimated total diamond weight: 1.65 carats; mounted in 18k white gold; length: 3in.*

\$6,000 - 9,000

142

A RUBY AND DIAMOND RING

centering a sugarloaf ruby cabochon, weighing 38.68 carats, flanked by two modified trapezoid diamonds, weighing a total of approximately 2.05 carats; *mounted in platinum; size 6 1/2*

\$80,000 - 120,000

Accompanied by AGL report # CS 1079268, dated October 21, 2016, stating the ruby as: Kenyan origin, no indications of heat or clarity enhancement.

Accompanied by Gubelin report # 16115041, dated November 3, 2016, stating the ruby as: Burma (Myanmar-Mogok Valley) origin, no indications of heat.

PROPERTY OF AN OREGON PRIVATE COLLECTOR

143

A PAIR OF RUBY AND DIAMOND EARRINGS

of cluster design, centering oval mixed-cut rubies, weighing approximately 4.50 and 3.60 carats, with a pear and marquise brilliant-cut diamond surround; *estimated total diamond weight: 14.00 carats; mounted in platinum; length: 1 1/8in.*

\$20,000 - 30,000

Accompanied by AGL report # CS 1079569 A and B, dated October 28, 2016, stating the rubies as: Burma (Myanmar - Mong Hsu) origin, indications of heat and minor clarity enhancement.

PROPERTY OF VARIOUS OWNERS

144

A DIAMOND BROOCH

of stylized foliate design, set throughout with baguette and round brilliant-cut diamonds, further enhanced by single-cut diamonds; *estimated total diamond weight: 12.70 carats; mounted in platinum; length: 3 5/8in.*

\$7,000 - 9,000

145

A PAIR OF DIAMOND EAR CLIPS, DAVID WEBB

centering a cluster of pear and round brilliant-cut diamonds; enclosed within a spiral spread of marquise and round brilliant-cut diamonds; *signed Webb; estimated total diamond weight: 12.00 carats; mounted in platinum; length: 1 1/2in.*

\$15,000 - 20,000

PROPERTY OF A NEW YORK PRIVATE COLLECTION

146

A PAIR OF DIAMOND AND CULTURED PEARL EARRINGS

designed as stylized snowflakes, set with round cultured pearls, each measuring approximately 10.3mm, within a baguette and round brilliant-cut diamond surround; *estimated total diamond weight: 11.40 carats; mounted in platinum; diameter: 1in.*

\$8,000 - 12,000



142

(side view)



143



144



145



146



147

PROPERTY OF VARIOUS OWNERS

147

A PAIR OF RUBY AND DIAMOND EAR CLIPS, DAVID WEBB

of cluster design, centering oval mixed-cut rubies, weighing approximately 2.45 and 2.40 carats, with marquise and round brilliant-cut diamonds; *signed David Webb, estimated total diamond weight: 12.15 carats; mounted in platinum; length: 1 1/2in.*

\$10,000 - 15,000



148

148

A DIAMOND BRACELET

of floral design, centering marquise, baguette and round brilliant-cut diamonds, to a double row of baguette-cut diamonds; *estimated total diamond weight: 12.50 carats; mounted in platinum; length: 6 1/4in.*

\$7,000 - 9,000

149

A SAPPHIRE DRESS SET

comprising a pair of cufflinks and two shirt studs, centering sapphire cabochons, the largest weighing approximately 10.60 and 10.20 carats; *mounted in platinum and 14k white gold; cufflink length: 1in.; stud length: 1 3/4in.*

\$20,000 - 30,000



149



150

150

A PAIR OF DIAMOND AND RUBY CLIPS

each plaque designed as a pavé-set diamond shield, centering oval-shaped ruby cabochons, enhanced with marquise and baguette-cut diamonds; *estimated total diamond weight: 13.00 carats; mounted in platinum and 14k white gold; length: 1 5/8in.*

\$12,000 - 18,000

151

A SAPPHIRE AND DIAMOND RING

centering a cushion sapphire, weighing approximately 5.08 carats, within a scrolled surround of old mine and round brilliant-cut diamonds; *estimated total diamond weight: 9.60 carats; mounted in 18k white gold; size 9 3/4*

\$10,000 - 15,000

152

A STAR SAPPHIRE AND DIAMOND RING

centering an oval-shaped star sapphire cabochon, weighing approximately 44.70 carats, accented by two kite-shaped diamonds; *mounted in platinum; size 7 1/2*

\$30,000 - 40,000

Accompanied by AGL report # CS 1079351, dated October 24, 2016, stating the sapphire as: Ceylon (Sri Lanka) origin, no indications of heat or clarity enhancement.



151



152



153



154

PROPERTY OF THE JOYCE B. DOHENY TRUST

153

A DIAMOND SOLITAIRE RING

centering a pear-shaped brilliant-cut diamond, weighing 6.00 carats, with tapered baguette-cut diamond shoulders; *accompanied by an 18k gold jacket, signed VCA; mounted in platinum; size 3 1/4*

\$75,000 - 125,000

Accompanied by GIA report # 5171651112, dated May 24, 2016, stating the diamond as: D color, VS1 clarity.

PROPERTY OF VARIOUS OWNERS

154

A DIAMOND AND RUBY BRACELET, TIFFANY & CO.

designed as five articulated geometric panels, each centering an oval mixed-cut ruby, further set with round brilliant-cut diamond, spaced by open rectangular loops set with similarly cut diamonds; *signed Tiffany & Co.; estimated total diamond weight: 20.50 carats; mounted in platinum; length: 7in.*

\$50,000 - 70,000

Accompanied by AGL report # CS 1078945, dated October 12, 2016, stating the ruby as: Burma (Myanmar) origin, no indications of heat or clarity enhancement.





155

156

157

158

**PROPERTY OF THE JOYCE
B. DOHENY TRUST**

155

A DIAMOND ETERNITY BAND

centrally set with asscher-cut diamonds, framed with round brilliant-cut diamonds; *estimated total diamond weight: 5.80 carats; mounted in platinum; size 5 3/4*

\$7,000 - 9,000

156

A DIAMOND RING

centering a marquise modified brilliant-cut diamond, weighing 2.02 carats, within a surround of pink brilliant-cut diamonds, between pear-shaped diamond shoulders, each within a brilliant-cut diamond surround; *estimated total diamond weight: 1.25 carats; mounted in platinum and 18k white gold; size 6 1/4 (colored diamonds untested for origin of color)*

\$18,000 - 25,000

Accompanied by GIA report # 1172944424, dated October 17, 2016, stating the diamond as: F color, VVS2 clarity.

157

A DIAMOND SOLITAIRE PENDANT NECKLACE

centering a heart-shaped brilliant-cut diamond, weighing 3.00 carats, suspended by a fancy link chain; *mounted in 14k white gold; length: 16 1/2in.*

\$12,000 - 18,000

Accompanied by GIA report # 2175652229, dated May 24, 2016, stating the diamond as: D color, VS1 clarity.

PROPERTY OF VARIOUS OWNERS

158

A TANZANITE AND DIAMOND RING

centering oval mixed-cut tanzanite, weighing 9.09 carats, with a pavé-set round brilliant-cut diamond split shank; *mounted in 18k white gold; size 6 3/4*

\$6,000 - 8,000

159

A CULTURED PEARL NECKLACE

comprising three rows of fifty-seven, fifty-nine and sixty-five graduated cultured pearls, measuring approximately 9.2 to 4.6mm, completed by a panel clasp of geometric design set with round brilliant-cut diamonds; *clasp mounted in platinum; length of shortest row: 16in.*

\$2,000 - 4,000



159



160

PROPERTY OF A ROYAL FAMILY

160

A SAPPHIRE AND DIAMOND RING

centering an oval mixed-cut sapphire, weighing 27.24 carats, within a surround of round brilliant-cut diamonds; *estimated total diamond weight: 3.20 carats; mounted in platinum; size 4*

\$30,000 - 50,000

Accompanied by AGL report # CS 1078739, dated October 12, 2016, stating the sapphire as: Burma (Myanmar) origin, no indications of heat or clarity enhancement.



161

PROPERTY OF VARIOUS OWNERS

161

A LADY'S DIAMOND WRISTWATCH, HARRY WINSTON, SWISS

the circular dial pavé-set with single-cut diamonds, platinum hands, to a round brilliant-cut diamond set bezel, quartz movement, with a collet-set round brilliant-cut diamond triple row bracelet and double deployant clasp; *signed Harry Winston, no.2948, with maker's mark and Swiss assay mark; accompanied by a signed box; estimated total diamond weight: 15.90 carats; mounted in platinum; length: 6 1/8in.*

\$45,000 - 55,000





162



163

PROPERTY OF AN OREGON PRIVATE COLLECTOR

162

AN EMERALD AND DIAMOND RING

centering a rectangular step-cut emerald, weighing 16.12 carats, framed by round brilliant-cut diamonds, with a pavé-set round brilliant-cut diamond split shank; *estimated total diamond weight: 6.60 carats; mounted in platinum and 18k gold; size 5 3/4*

\$50,000 - 80,000

Accompanied by AGL report # CS 1079404, dated October 21, 2016, stating the emerald as: Colombian origin, minor traditional enhancement.

163

AN EMERALD AND DIAMOND BRACELET, WASLIKOFF

composed of a line of channel-set square step-cut diamonds, between similarly cut emeralds; *no.6298, with maker's mark; estimated total diamond weight: 7.00 carats; mounted in platinum; length: 7 1/8in.*

\$6,000 - 9,000

PROPERTY OF VARIOUS OWNERS

164

A PAIR OF SAPPHIRE AND DIAMOND EAR PENDANTS, ALEXANDRE LAUT

centering heart-shaped mixed-cut sapphires, weighing 6.18 and 5.92 carats, within a frame of round brilliant-cut diamonds, accented by fancy-cut diamonds; *signed Laut, no.7585; estimated total diamond weight: 8.45 carats; mounted in platinum; length: 2 3/4in.*

\$20,000 - 30,000

Accompanied by GRS report # GRS2006-011161, dated January 21, 2006, stating the sapphires as: Burma (Mogok, Pyen Pit) origin, no indications of thermal treatment.



164

165

A DIAMOND SOLITAIRE RING, HARDY BROTHERS

centering a round brilliant-cut diamond, weighing 4.05 carats, between two tapered baguette-cut diamond shoulders; *signed H.Bros; accompanied by a signed box; mounted in platinum; size 5 3/4*

\$40,000 - 60,000

Accompanied by GIA report # 1172905518, dated September 28, 2016, stating the diamond as: E color, SI1 clarity.



165

166

A COLORED SAPPHIRE AND DIAMOND RING

centering an octagonal step-cut purple pink sapphire, weighing 15.59 carats, enhanced with a round brilliant-cut diamonds; *mounted in platinum; size 6 1/4*

\$30,000 - 50,000

Accompanied by Gubelin report # 16010185, dated February 03, 2016, stating the purple-pink sapphire as: no indications of heat.



166



167

168

169

170

167

A SAPPHIRE AND DIAMOND RING

centering a cushion modified mixed-cut sapphire, weighing 27.49 carats, flanked either side by triangular-shaped diamonds; *estimated total diamond weight: 4.95 carats; mounted in platinum; size 6*

\$100,000 - 150,000

Accompanied by AGL report # CS 50349, dated July 11, 2012, stating the sapphire as: Ceylon (Sri Lanka) origin, no indications of heat or clarity enhancement.

169

A DIAMOND SOLITAIRE RING

centering a round brilliant-cut diamond, weighing 3.61 carats, with tapered baguette-cut diamond shoulders; *mounted in platinum; size 3 3/4*

\$60,000 - 80,000

Accompanied by GIA report # 5206684679, dated September 08, 2015, stating the diamond as: E color, VVS1 clarity.

168

A DIAMOND SOLITAIRE RING

centering an emerald-cut diamond, weighing 3.03 carats; *mounted in platinum; size 6*

\$50,000 - 70,000

Accompanied by GIA report # 5172607417, dated April 26, 2016, stating the diamond as: F color, VVS2 clarity.

170

A DIAMOND RING

centering a pear-shaped brilliant-cut diamond, weighing 5.19 carats, with tapered baguette-cut diamond shoulders; *mounted in platinum; size 7*

\$125,000 - 150,000

Accompanied by GIA report # 2175817560, dated August 22, 2016, stating the diamond as: F color, VVS2 clarity.





171

A DIAMOND AND RUBY NECKLACE

designed as an articulated, marquise, baguette and round brilliant-cut diamond ribbon, enhanced by oval and round mixed-cut rubies, *estimated total diamond weight: 48.00 carats; mounted in platinum; length: 14 3/4in.*

\$100,000 - 150,000

Accompanied by AGL report # CS 1078965, dated October 14, 2016, stating the rubies as: Burma (Myanmar) origin, no indications of heat or clarity enhancement.





172



173

PROPERTY OF AN OREGON PRIVATE COLLECTOR

172

**AN ART DECO DIAMOND AND SAPPHIRE BROOCH,
FRENCH, CIRCA 1925**

designed as a bow, set throughout with old European-cut diamonds, with calibré-cut sapphire highlights; with maker's mark and French assay mark; estimated total diamond weight: 16.00 carats; mounted in platinum; length: 2 7/16in.

\$8,000 - 12,000

PROPERTY OF ANOTHER OWNER

173

AN EMERALD AND DIAMOND RING

centering a rectangular step-cut emerald, weighing 13.82 carats, flanked either side by trapezoid-shaped diamonds; estimated total diamond weight: 1.50 carats; mounted in platinum; size 6 1/2

\$280,000 - 380,000

Accompanied by AGL report # CS 85364, dated June 13, 2016, stating the emerald as: Colombian origin, indications of minor (modern) clarity enhancements.

Accompanied by Gubelin report # 12040060, dated April 16, 2012, stating the emerald as: Colombian origin, indications of minor clarity enhancement.





174



175

PROPERTY OF AN OREGON PRIVATE COLLECTOR

174
AN ART DECO EMERALD AND DIAMOND BROOCH, CIRCA 1930

of geometric triangular design, centering an epaulet step-cut emerald, weighing approximately 4.75 carats, enhanced by triangular, square, rectangular and baguette-cut diamonds; *estimated total diamond weight: 17.50 carats; mounted in platinum; length: 2in.*

\$30,000 - 50,000

Accompanied by AGL report # CS 1079561, dated October 27, 2016, stating the emerald as: Colombian origin, indications of insignificant (traditional) clarity enhancement.

175
AN AQUAMARINE AND DIAMOND BROOCH, TRABERT, HOFFER & MAUBOUSSIN, CIRCA 1940

centering a rectangular step-cut aquamarine, weighing approximately 37.00 carats, set throughout with baguette, single, old European and round brilliant-cut diamonds; *signed Trabert & Hoeffler Mauboussin; estimated total diamond weight: 7.00 carats; mounted in platinum; length: 1 11/16in.*

\$10,000 - 15,000





176

AN EMERALD AND DIAMOND RING

centering a cut-cornered rectangular step-cut emerald, weighing approximately 6.30 carats, flanked either side by two tapered baguette-cut diamond shoulders, within a calibr -cut emerald border; mounted in 18k bi-colored gold; size 7 1/2

\$20,000 - 30,000

Accompanied by AGL report # CS 1079560, dated October 27, 2016, stating the emerald as: Colombian origin, indications of insignificant to minor (traditional) clarity enhancement.



177

AN ART DECO EMERALD AND DIAMOND BRACELET, TIFFANY & CO., CIRCA 1925

centering a squared sugarloaf emerald cabochon, weighing approximately 10.50 carats, between a graduated line of old European-cut diamonds, with a calibr -cut emerald border; signed *Tiffany & Co., no.180*; estimated total diamond weight: 22.00 carats; mounted in platinum; diameter: 2 1/8in.

\$75,000 - 85,000

Accompanied by AGL report # CS 1079562, dated October 27, 2016, stating the emerald as: Colombian origin, indications of minor (traditional) clarity enhancement.





PROPERTY OF ANOTHER OWNER

178

A SAPPHIRE AND DIAMOND RING, SHREVE & CO., CIRCA 1900

centering a cushion mixed-cut sapphire, weighing approximately 6.90 carats, within a raised gallery of old European-cut diamonds and scrolled metal work; *signed; accompanied by a signed box; estimated total diamond weight: 1.00 carat; mounted in platinum and 18k gold; size 6 1/2*

\$70,000 - 90,000

Accompanied by AGL report # CS 1078740, dated October 12, 2016, stating the sapphire as: Classic Kashmir origin, no indications of heat or clarity enhancement.





PROPERTY OF AN OREGON PRIVATE COLLECTOR

179

AN IMPORTANT DIAMOND SOLITAIRE RING

centering a cut-cornered rectangular step-cut diamond, weighing 17.97 carats, with tapered baguette-cut diamond shoulders; *mounted in platinum; size 6 3/4*

\$1,000,000 - 1,500,000

Accompanied by GIA report # 6173989040, dated October 27, 2016, stating the diamond as: D color, VS1 clarity, Type IIa.

Type IIa diamonds make up less than 2% of all natural diamonds and are almost pure carbon. They are so exceptional because they contain very little nitrogen, or none at all, which means that light can easily pass through the diamond and bounce back to the beholder's eye, producing a stunning, colourless appearance. Many of the most famous diamonds throughout history have been Type IIa: the world's largest cut diamond - the Cullinan, the Koh-i-Noor & the Hope Diamond are, but a few, examples.



DIAMOND INDEX

Lot No.	Carat	Cut	Color	Clarity	Certificate
101	5.09	Rectangular	W-X	VS1	GIA
100	3.00	Pear	Natural Fancy Light Brownish Yellow	SI2	GIA
110	2.73	Shield	Fancy Intense Yellow	SI1	GIA
168	3.03	Rectangular	F	VS2	GIA
82	3.84	Pear	G	VS1	GIA
153	6.00	Pear	D	VS1	GIA
157	3.00	Heart	D	VS1	GIA
170	5.19	Pear	F	VS2	GIA
169	3.61	Round Brilliant	E	VS1	GIA
138	8.48	Round Brilliant	L+	I	
109	11.93	Marquise	I	SI1	GIA
49	5.63	Marquise	L+	I	
165	4.05	Round Brilliant	E	SI1	GIA
102	3.50	Oval	Fancy Yellow		GIA
156	2.02	Marquise	F	VS2	GIA
105	2.63	Rectangular	Y-Z	SI1	GIA
57	1.80	Round Brilliant	D	VS1	GIA
37	1.96	Marquise	E	VS1	GIA
179	17.97	Rectangular	D	VS1 (Type IIa)	GIA

* next to color - not tested for origin of color

* next to piece - other significant stones within the piece

* next to weight - approximate weight

* next to cert - lab graded color only

* next to lot number - Bonhams specialists disagree with the grade. Please see a specialist for details.

This list is provided for your convenience based on the opinion of our gemologists.

It in no way represents a guarantee or warranty.

Bonhams is not responsible for any discrepancies between this information and other opinions.

CERTIFIED RUBY INDEX

Lot No.	Carat/Dimensions	Cut	Origin	Treatment	Laboratory Report
12	Graduated Row	Cushion	Classic Burma (Myanmar)	None	AGL
142	38.68	Sugarloaf Cabochon	Burma (Myanmar)	Kenya	None AGL
			Burma (Myanmar)	None	Gubelin
10	3.25	Cushion	Burma (Myanmar)	None	AGL
139	2.57	Round	Classic Burma (Myanmar)	None	AGL
			Burma (Myanmar)	None	C. Dunaigre
154	5 equal 4.50 approx	Oval	Burma (Myanmar)	None	AGL
171	31 equal 40.00 approx	Oval & Round	Burma (Myanmar)	None	AGL
56	8.75	Oval	Thailand	Heat, Insignificant to Minor Clarity	AGL
143	4.50 & 3.60 approx	Oval	Burma (Mong Hsu)	Heat, Minor Clarity	AGL

CERTIFIED PEARL INDEX

Lot No.	Carat/Dimensions	Cut	Origin	Treatment	Laboratory Report
14	Round	7.2 to 4.2mm	Natural Saltwater	None	GIA
74	Semi-Baroque	10.3mm	Natural Saltwater	None	GIA
8	Round	9.5 to 3.1mm	109 Natural, 1 Cultured		GIA

CERTIFIED SAPPHIRE INDEX

Lot No.	Carat/Dimensions	Cut	Origin	Treatment	Laboratory Report
17	12.2 x 10.5 x 6.5mm	Octagonal	Ceylon (Sri Lanka)	None	AGL
125	12.23	Cushion	Ceylon (Sri Lanka)	None	AGL
125	12.23	Cushion	Burma (Myanmar)	None	GIA
72	19.10	Cabochon	Not Determinable	None	AGL
6	6.50 approximately	Carving			
99	18.17	Oval	Ceylon (Sri Lanka)	None	AGL
94	10.99 & 12.75	Oval	Ceylon (Sri Lanka)	None	AGL
94h	11.54 & 11.41	Oval	Ceylon (Sri Lanka)	None	AGL
70	14.87	Cushion			
129	12.50	Oval	Burma (Myanmar)	None	AGL
164	6.18 & 5.92	Heart	Burma (Mogok, Pyen Pit)	None	AGL
149	10.60 & 10.20	Cabochon			
152	44.70	Cabochon	Ceylon (Sri Lanka)	None	AGL
13	Graduated Row	Cushion	Classic Burma (Myanmar)	None	AGL
178	6.90	Cushion	Classic Kashmir	None	AGL
160	27.24	Oval	Burma (Myanmar)	None	AGL
135	25.26	Oval	Ceylon (Sri Lanka)	None	AGL
136	11.10	Rectangular	Burma (Myanmar)	None	AGL
21	3.23	Oval		None	AGL
140	9.60	Oval	Ceylon (Sri Lanka)	Indications of Heat	AGL
22	8.82	Cushion	Burma (Myanmar)	None	GIA
22	8.82	Cushion	Ceylon (Sri Lanka)	None	AGL
167	27.49	Cushion	Ceylon (Sri Lanka)	None	AGL
16	3.63	Oval	Madagascar	None	GRS
166	15.59	Octagonal		None	Gubelin
133	46.90	Cabochon	Ceylon (Sri Lanka)	None	AGL

CERTIFIED EMERALD INDEX

Lot No.	Carat/Dimensions	Cut	Origin	Treatment	Laboratory Report
89	3.40 & 3.85 approx	Cabochon			
38	5.30 approx	Cabochon	Zimbabwean (Sandawana)		Minor/Traditional AGL
11	Graduated Row	Rectangular	Classic Colombian	Insignificant/Traditional	AGL
123	16.43	Oval	Colombian	Minor/Traditional	AGL
124	23.46	Oval	Colombian	Minor/Modern clarity & infilling	AGL
5	1.60	Octagonal	Colombian	Insignificant to Minor/Modern	AGL
5	1.60	Octagonal	Colombian	None	GIA
173	13.82	Rectangular	Colombian	Minor/Modern	AGL
173	13.82	Rectangular	Colombian	Minor	Gubelin
162	16.12	Rectangular	Colombian	Minor/Traditional	AGL
176	6.30	Rectangular	Colombian	Insignificant to Minor/Traditional	AGL
177	10.50 approx	Sugarloaf Cabochon		Colombian	Minor/Traditional AGL
174	4.75 approx	Triangular	Colombian	Insignificant/Traditional	AGL

CERTIFIED JADE INDEX

Lot No.	Carat/Dimensions	Cut	Origin	Treatment	Laboratory Report
111	20.3 x 13.4 x 3.2mm	Cabochon	A	None	Mason-Kay
113	14.4 x 10.3 x 2.9mm	Cabochon	A	None	Mason-Kay
113	16.7 x 11.8 x 4.5mm	Cabochon	A	None	Mason-Kay
113	14.3 x 9.9 x 2.5mm	Cabochon	A	None	Mason-Kay
113	17.7 x 12.3 x 4.2mm	Cabochon	A	None	Mason-Kay
48	7.00 approx	Cabochon	A	None	Mason-Kay
7		Oval	A	None	Mason-Kay
				None	GIA

CONDITIONS OF SALE

The following Conditions of Sale, as amended by any published or posted notices or verbal announcements during the sale, constitute the entire terms and conditions on which property listed in the catalog shall be offered for sale or sold by Bonhams & Butterfields Auctioneers Corp. and any consignor of such property for whom we act as agent. If live online bidding is available for the subject auction, additional terms and conditions of sale relating to online bidding will apply; see www.bonhams.com/WebTerms for the supplemental terms. As used herein, "Bonhams," "we" and "us" refer to Bonhams & Butterfields Auctioneers Corp.

1. As used herein, the term "bid price" means the price at which a lot is successfully knocked down to the purchaser. The term "purchase price" means the aggregate of (a) the bid price, (b) a PREMIUM retained by us and payable by the purchaser EQUAL TO 25% OF THE FIRST \$150,000 OF THE BID PRICE, 20% OF THE AMOUNT OF THE BID PRICE ABOVE \$150,000 UP TO AND INCLUDING \$3,000,000, AND 12% OF THE AMOUNT OF THE BID PRICE OVER \$3,000,000, and (c) unless the purchaser is exempt by law from the payment thereof, any Arizona, California, Colorado, Connecticut, Florida, Georgia, Illinois, Massachusetts, Nevada, New Jersey, New York, Pennsylvania, Texas, Virginia, Washington, D.C., Washington state, or other state or local sales tax (or compensating use tax) and other applicable taxes. With regard to New York sales tax, please refer to the "Sales and Use Tax" section of these Conditions of Sale.

2. On the fall of the auctioneer's hammer, the highest bidder shall have purchased the offered lot in accordance and subject to compliance with all of the conditions set forth herein and (a) assumes full risk and responsibility therefor, (b) if requested will sign a confirmation of purchase, and (c) will pay the purchase price in full or such part as we may require for all lots purchased. No lot may be transferred. Any person placing a bid as agent on behalf of another (whether or not such person has disclosed that fact or the identity of the principal) may be jointly and severally liable with the principal under any contract resulting from the acceptance of a bid.

Unless otherwise agreed, payment in good funds is due and payable within five (5) business days following the auction sale. Whenever the purchaser pays only a part of the total purchase price for one or more lots purchased, we may apply such payments, in our sole discretion, to the lot or lots we choose. Payment will not be deemed made in full until we have collected good funds for all amounts due.

Payment for purchases may be made in or by (a) cash, (b) cashier's check or money order, (c) personal check with approved credit drawn on a U.S. bank, (d) wire transfer or other immediate bank transfer, or (e) Visa, MasterCard, American Express or Discover credit, charge or debit card. A processing fee will be assessed on any returned checks. Please note that the amount of cash notes and cash equivalents that can be accepted from a given purchaser may be limited.

The purchaser grants us a security interest in the property, and we may retain as collateral security for the purchaser's obligations to us, any property and all monies held or received by us for the account of the purchaser, in our possession. We retain all rights of a secured party under the California Commercial Code. If the foregoing conditions or any other applicable conditions herein are not complied with, in addition to other remedies available to us and the consignor by law, including without limitation, the right to hold the purchaser liable for the purchase price, we at our option may either (a) cancel the sale, retaining as liquidated damages all payments made by the purchaser or (b) resell the property, either publicly or privately, and in such event the purchaser shall be liable for the payment of any deficiency plus all costs and expenses

of both sales, our commission at our standard rates, all other charges due hereunder, attorneys' fees, expenses and incidental damages. In addition, where two or more amounts are owed in respect of different transactions by the purchaser to us, to Bonhams 1793 Limited and/or to any of our other affiliates, subsidiaries or parent companies worldwide within the Bonhams Group, we reserve the right to apply any monies paid in respect of a transaction to discharge any amount owed by the purchaser. If all fees, commissions, premiums, bid price and other sums due to us from the purchaser are not paid promptly as provided in these Conditions of Sale, we reserve the right to impose a finance charge equal to 1.5% per month on all amounts due to us beginning on the 31st day following the sale until payment is received, in addition to other remedies available to us by law.

3. We reserve the right to withdraw any property and to divide and combine lots at any time before such property's auction. Unless otherwise announced by the auctioneer at the time of sale, all bids are per lot as numbered in the catalog and no lots shall be divided or combined for sale.

4. We reserve the right to reject a bid from any bidder, to split any bidding increment, and to advance the bidding in any manner the auctioneer may decide. In the event of any dispute between bidders, or in the event the auctioneer doubts the validity of any bid, the auctioneer shall have sole and final discretion either to determine the successful bidder or to re-offer and resell the article in dispute. If any dispute arises after the sale, our sales records shall be conclusive in all respects.

5. If we are prevented by fire, theft or any other reason whatsoever from delivering any property to the purchaser or a sale otherwise cannot be completed, our liability shall be limited to the sum actually paid therefor by the purchaser and shall in no event include any compensatory, incidental or consequential damages.

6. If a lot is offered subject to a reserve, we may implement such reserve by bidding on behalf of the consignor, whether by opening bidding or continuing bidding in response to other bidders until reaching the reserve. If we have an interest in an offered lot and the proceeds therefrom other than our commissions, we may bid therefor to protect such interest. CONSIGNORS ARE NOT ALLOWED TO BID ON THEIR OWN ITEMS.

7. All statements contained in the catalog or in any bill of sale, condition report, invoice or elsewhere as to authorship, period, culture, source, origin, measurement, quality, rarity, provenance, importance, exhibition and literature of historical relevance, or physical condition ARE QUALIFIED STATEMENTS OF OPINION AND NOT REPRESENTATIONS OR WARRANTIES. No employee or agent of Bonhams is authorized to make on our behalf or on that of the consignor any representation or warranty, oral or written, with respect to any property.

8. All purchased property shall be removed from the premises at which the sale is conducted by the date(s) and time(s) set forth in the "Buyer's Guide" portion of the catalog. If not so removed, daily storage fees will be payable to us by the purchaser as set forth therein. We reserve the right to transfer property not so removed to an offsite warehouse at the purchaser's risk and expense, as set forth in more detail in the "Buyer's Guide." Accounts must be settled in full before property will be released. Packing and handling of purchased lots are the responsibility of the purchaser. Bonhams can provide packing and shipping services for certain items as noted in the "Buyer's Guide" section of the catalog.

9. The copyright in the text of the catalog and the photographs, digital images and illustrations of lots in the catalog belong to Bonhams or its licensors. You will not reproduce or permit anyone else to reproduce such text, photographs, digital images or illustrations without our prior written consent.

10. These Conditions of Sale shall bind the successors and assigns of all bidders and purchasers and inure to the benefit of our successors and assigns. No waiver, amendment or modification of the terms hereof (other than posted notices or oral announcements during the sale) shall bind us unless specifically stated in writing and signed by us. If any part of these Conditions of Sale is for any reason invalid or unenforceable, the rest shall remain valid and enforceable.

11. These Conditions of Sale and the purchaser's and our respective rights and obligations hereunder are governed by the laws of the State of California. By bidding at an auction, each purchaser and bidder agrees to be bound by these Conditions of Sale. Any dispute, controversy or claim arising out of or relating to this agreement, or the breach, termination or validity thereof, brought by or against Bonhams (but not including claims brought against the consignor by the purchaser of lots consigned hereunder) shall be resolved by the procedures set forth below.

SALES AND USE TAX

New York sales tax is charged on the hammer price, buyer's premium and any other applicable charges on any property collected or delivered in New York State, regardless of the state or country in which the purchaser resides or does business. Purchasers who make direct arrangements for collection by a shipper who is considered a "private" or "contract" carrier by the New York Department of Taxation and Finance will be charged New York sales tax, regardless of the destination of the property. Property collected for delivery to a destination outside of New York by a shipper who is considered a "common carrier" by the New York Department of Taxation and Finance (e.g. United States Postal Service, United Parcel Service, and FedEx) is not subject to New York sales tax, but if it is delivered into any state in which Bonhams is registered or otherwise conducts business sufficient to establish a nexus, Bonhams may be required by law to collect and remit the appropriate sales tax in effect in such state. Property collected for delivery outside of the United States by a freight-forwarder who is registered with the Transportation Security Administration ("TSA") is not subject to New York sales tax.

MEDIATION AND ARBITRATION PROCEDURES

(a) Within 30 days of written notice that there is a dispute, the parties or their authorized and empowered representatives shall meet by telephone and/or in person to mediate their differences. If the parties agree, a mutually acceptable mediator shall be selected and the parties will equally share such mediator's fees. The mediator shall be a retired judge or an attorney familiar with commercial law and trained in or qualified by experience in handling mediations. Any communications made during the mediation process shall not be admissible in any subsequent arbitration, mediation or judicial proceeding. All proceedings and any resolutions thereof shall be confidential, and the terms governing arbitration set forth in paragraph (c) below shall govern.

(b) If mediation does not resolve all disputes between the parties, or in any event no longer than 60 days after receipt of the written notice of dispute referred to above, the parties shall submit the dispute for binding arbitration before a single neutral arbitrator. Such arbitrator shall be a retired judge or an attorney familiar with commercial law and trained in or qualified by experience in handling arbitrations. Such arbitrator shall make all appropriate disclosures required by law. The arbitrator shall be drawn from a panel of a national arbitration service agreed to by the parties, and shall be selected as follows: (i) If the national arbitration service has specific rules or procedures, those rules or procedures shall be followed; (ii) If the national arbitration service does not have rules or procedures for the selection of an arbitrator, the

arbitrator shall be an individual jointly agreed to by the parties. If the parties cannot agree on a national arbitration service, the arbitration shall be conducted by the American Arbitration Association, and the arbitrator shall be selected in accordance with the Rules of the American Arbitration Association. The arbitrator's award shall be in writing and shall set forth findings of fact and legal conclusions.

(c) Unless otherwise agreed to by the parties or provided by the published rules of the national arbitration service:

(i) the arbitration shall occur within 60 days following the selection of the arbitrator;

(ii) the arbitration shall be conducted in the designated location, as follows: (A) in any case in which the subject auction by Bonhams took place or was scheduled to take place in the State of New York or Connecticut or the Commonwealth of Massachusetts, the arbitration shall take place in New York City, New York; (B) in all other cases, the arbitration shall take place in the city of San Francisco, California; and

(iii) discovery and the procedure for the arbitration shall be as follows:

(A) All arbitration proceedings shall be confidential;

(B) The parties shall submit written briefs to the arbitrator no later than 15 days before the arbitration commences;

(C) Discovery, if any, shall be limited as follows: (I) Requests for no more than 10 categories of documents, to be provided to the requesting party within 14 days of written request therefor; (II) No more than two (2) depositions per party, provided however, the deposition(s) are to be completed within one (1) day; (III) Compliance with the above shall be enforced by the arbitrator in accordance with California law;

(D) Each party shall have no longer than eight (8) hours to present its position. The entire hearing before the arbitrator shall not take longer than three (3) consecutive days;

(E) The award shall be made in writing no more than 30 days following the end of the proceeding. Judgment upon the award rendered by the arbitrator may be entered by any court having jurisdiction thereof.

To the fullest extent permitted by law, and except as required by applicable arbitration rules, each party shall

bear its own attorneys' fees and costs in connection with the proceedings and shall share equally the fees and expenses of the arbitrator.

LIMITED RIGHT OF RESCISSION

If within one (1) year from the date of sale, the original purchaser (a) gives written notice to us alleging that the identification of Authorship (as defined below) of such lot as set forth in the **BOLD TYPE** heading of the catalog description of such lot (as amended by any saleroom notices or verbal announcements during the sale) is not substantially correct based on a fair reading of the catalog (including the terms of any glossary contained therein), and (b) within 10 days after such notice returns the lot to us in the same condition as at the time of sale, and (c) establishes the allegation in the notice to our satisfaction (including by providing one or more written opinions by recognized experts in the field, as we may reasonably require), then the sale of such lot will be rescinded and, unless we have already paid to the consignor monies owed him in connection with the sale, the original purchase price will be refunded.

If, prior to receiving such notice from the original purchaser alleging such defect, we have paid the consignor monies owed him in connection with the sale, we shall pay the original purchaser the amount of our commissions, any other sale proceeds to which we are entitled and applicable taxes received from the purchaser on the sale and make demand on the consignor to pay the balance of the original purchase price to the original purchaser. Should the consignor fail to pay such amount promptly, we may disclose the identity of the consignor and assign to the original purchaser our rights against the consignor with respect to the lot the sale of which is sought to be rescinded. Upon such disclosure and assignment, any liability of Bonhams as consignor's agent with respect to said lot shall automatically terminate.

The foregoing limited right of rescission is available to the original purchaser only and may not be assigned to or relied upon by any subsequent transferee of the property sold. The purchaser hereby accepts the benefit of the consignor's warranty of title and other representations and warranties made by the consignor for the purchaser's benefit. Nothing in this section shall be construed as an admission by us of any representation of fact, express or implied, obligation or responsibility with respect to any lot. **THE PURCHASER'S SOLE AND EXCLUSIVE REMEDY AGAINST BONHAMS FOR ANY**

REASON WHATSOEVER IS THE LIMITED RIGHT OF RESCISSION DESCRIBED IN THIS SECTION.

"Authorship" means only the identity of the creator, the period, culture and source or origin of the lot, as the case may be, as set forth in the **BOLD TYPE** heading of the print catalog entry. The right of rescission does not extend to: (a) works of art executed before 1870 (unless these works are determined to be counterfeits created since 1870), as this is a matter of current scholarly opinion which can change; (b) titles, descriptions, or other identification of offered lots, which information normally appears in lower case type below the **BOLD TYPE** heading identifying the Authorship; (c) Authorship of any lot where it was specifically mentioned that there exists a conflict of specialist or scholarly opinion regarding the Authorship of the lot at the time of sale; (d) Authorship of any lot which as of the date of sale was in accordance with the then generally-accepted opinion of scholars and specialists regarding the same; or (e) the identification of periods or dates of creation in catalog descriptions which may be proven inaccurate by means of scientific processes that are not generally accepted for use until after publication of the catalog in which the property is offered or that were unreasonably expensive or impractical to use at the time of such publication.

LIMITATION OF LIABILITY

EXCEPT AS EXPRESSLY PROVIDED ABOVE, ALL PROPERTY IS SOLD "AS IS." NEITHER BONHAMS NOR THE CONSIGNOR MAKES ANY REPRESENTATION OR WARRANTY, EXPRESS OR IMPLIED, AS TO THE MERCHANTABILITY, FITNESS OR CONDITION OF THE PROPERTY OR AS TO THE CORRECTNESS OF DESCRIPTION, GENUINENESS, ATTRIBUTION, PROVENANCE OR PERIOD OF THE PROPERTY OR AS TO WHETHER THE PURCHASER ACQUIRES ANY COPYRIGHTS OR OTHER INTELLECTUAL PROPERTY RIGHTS IN LOTS SOLD OR AS TO WHETHER A WORK OF ART IS SUBJECT TO THE ARTIST'S MORAL RIGHTS OR OTHER RESIDUAL RIGHTS OF THE ARTIST. THE PURCHASER EXPRESSLY ACKNOWLEDGES AND AGREES THAT IN NO EVENT SHALL BONHAMS BE LIABLE FOR ANY DAMAGES INCLUDING, WITHOUT LIMITATION, ANY COMPENSATORY, INCIDENTAL OR CONSEQUENTIAL DAMAGES.

SELLER'S GUIDE

SELLING AT AUCTION

Bonhams can help you every step of the way when you are ready to sell art, antiques and collectible items at auction. Our regional offices and representatives throughout the US are available to service all of your needs. Should you have any further questions, please visit our website at www.bonhams.com/us for more information or call our Client Services Department at +1 (800) 223 2854 ext. 23550.

AUCTION ESTIMATES

The first step in the auction process is to determine the auction value of your property. Bonhams' world-renowned specialists will evaluate your special items at no charge and in complete confidence. You can obtain an auction estimate in many ways:

- Attend one of our Auction Appraisal Events held regularly at our galleries and in other major metropolitan areas. The updated schedule for Bonhams Auction Appraisal Events is available at www.bonhams.com/us.
- Call our Client Services Department to schedule a private appointment at one of our galleries. If you have a large collection, our specialists can travel, by appointment, to evaluate your property on site.
- Send clear photographs to us of each individual item, including item dimensions and other pertinent information with each picture. Photos should be sent to Bonhams' address in envelopes marked

as "photo auction estimate". Alternatively, you can submit your request using our online form at www.bonhams.com/us. Digital images may be attached to the form. Please limit your images to no more than five (5) per item.

CONSIGNING YOUR PROPERTY

After you receive an estimate, you may consign your property to us for sale in the next appropriate auction. Our staff assists you throughout the process, arranging transportation of your items to our galleries (at the consignor's expense), providing a detailed inventory of your consignment, and reporting the prices realized for each lot. We provide secure storage for your property in our warehouses and all items are insured throughout the auction process. You will receive payment for your property approximately 35 days after completion of sale.

Sales commissions vary with the potential auction value of the property and the particular auction in which the property is offered. Please call us for commission rates.

PROFESSIONAL APPRAISAL SERVICES

Bonhams' specialists conduct insurance and fair market value appraisals for private collectors, corporations, museums, fiduciaries and government entities on a daily basis. Insurance appraisals, used for insurance purposes, reflect the cost of replacing property in today's retail market. Fair market value appraisals are used for estate,

tax and family division purposes and reflect prices paid by a willing buyer to a willing seller.

When we conduct a private appraisal, our specialists will prepare a thorough inventory listing of all your appraised property by category. Valuations, complete descriptions and locations of items are included in the documentation.

Appraisal fees vary according to the nature of the collection, the amount of work involved, the travel distance, and whether the property is subsequently consigned for auction.

Our appraisers are available to help you anywhere and at any time. Please call our Client Services Department to schedule an appraisal.

ESTATE SERVICES

Since 1865, Bonhams has been serving the needs of fiduciaries – lawyers, trust officers, accountants and executors – in the disposition of large and small estates. Our services are specially designed to aid in the efficient appraisal and disposition of fine art, antiques, jewelry, and collectibles. We offer a full range of estate services, ranging from flexible financial terms to tailored accounting for heirs and their agents to world-class marketing and sales support.

For more information or to obtain a detailed Trust and Estates package, please visit our website at www.bonhams.com/us or contact our Client Services Department.

BUYER'S GUIDE

BIDDING & BUYING AT AUCTION

Whether you are an experienced bidder or an enthusiastic novice, auctions provide a stimulating atmosphere unlike any other. Bonhams previews and sales are free and open to the public. As you will find in these directions, bidding and buying at auction is easy and exciting. Should you have any further questions, please visit our website at www.bonhams.com or call our Client Services Department at +1 (800) 223 2854 ext. 3550.

Catalogs

Before each auction we publish illustrated catalogs. Our catalogs provide descriptions and estimated values for each "lot." A lot may refer to a single item or to a group of items auctioned together. The catalogs also include the dates and the times for the previews and auctions. We offer our catalogs by subscription or by single copy. For information on subscribing to our catalogs, you may refer to the subscription form in this catalog, call our Client Services Department, or visit our website at www.bonhams.com/us.

Previews

Auction previews are your chance to inspect each lot prior to the auction. We encourage you to look closely and examine each object on which you may want to bid so that you will know as much as possible about it. Except as expressly set forth in the Conditions of Sale, items are sold "as is" and with all faults; illustrations in our catalogs, website and other materials are provided for identification only. At the previews, our staff is always available to answer your questions and guide you through the auction process. Condition reports may be available upon request.

Estimates

Bonhams catalogs include low and high value estimates for each lot, exclusive of the buyer's premium and tax. The estimates are provided as an approximate guide to current market value based primarily on previous auction results for comparable pieces, and should not be interpreted as a representation or prediction of actual selling prices. They are determined well in advance of a sale and are subject to revision. Please contact us should you have any questions about value estimates.

Reserves

Unless indicated by the \square symbol next to the lot number, which denotes no reserve, all lots in the catalog are subject to a reserve. The reserve is the minimum auction price that the consignor is willing to accept for a lot. This amount is confidential and does not exceed the low estimate value.

Auction House's Interest in Property Offered at Auction

On occasion, Bonhams may offer property in which it has an ownership interest in whole or in part or otherwise has an economic interest. Such property, if any, is identified in the catalog with a \blacktriangle symbol next to the lot number(s).

Bonhams may also offer property for a consignor that has been guaranteed a minimum price for its property by Bonhams or jointly by Bonhams and a third party. Bonhams and any third parties providing a guarantee may benefit financially if the guaranteed property is sold successfully and may incur a financial loss if its sale is not successful. Such property, if any, is identified in the catalog with a \circ symbol next to the lot number(s).

Bidding at Auction

At Bonhams, you can bid in many ways: in person, via absentee bid, over the phone, or via Bonhams' live online bidding facility. Absentee bids can be submitted in person, online, via fax or via email.

Valid Bonhams client accounts are required to participate in bidding activity. You can obtain registration information online, at the reception desk or by calling our Client Services Department.

By bidding at auction, whether in person or by agent, by absentee bid, telephone, online or other means, the buyer or bidder agrees to be bound by the Conditions of Sale.

Lots are auctioned in consecutive numerical order as they appear in the catalog. Bidding normally begins below the low estimate. The auctioneer will accept bids from interested parties present in the saleroom, from telephone bidders, and from absentee bidders who have left written bids in advance of the sale. The auctioneer may also execute bids on behalf of the consignor by placing responsive or consecutive bids for a lot up to the amount of the reserve, but never above it.

We assume no responsibility for failure to execute bids for any reason whatsoever.

In Person

If you are planning to bid at auction for the first time, you will need to register at the reception desk in order to receive a numbered bid card. To place a bid, hold up your card so that the auctioneer can clearly see it. Decide on the maximum auction price that you wish to pay, exclusive of buyer's premium and tax, and continue bidding until your bid prevails or you reach your limit. If you are the successful bidder on a lot, the auctioneer will acknowledge your paddle number and bid amount.

Absentee Bids

As a service to those wishing to place bids, we may at our discretion accept bids without charge in advance of auction online or in writing on bidding forms available from us. "Buy" bids will not be accepted; all bids must state the highest bid price the bidder is willing to pay. Our auction staff will try to bid just as you would, with the goal of obtaining the item at the lowest bid price possible. In the event identical bids are submitted, the earliest bid submitted will take precedence. Absentee bids shall be executed in competition with other absentee bids, any applicable reserve, and bids from other auction participants. A friend or agent may place bids on your behalf, provided that we have received your written authorization prior to the sale. Absentee bid forms are available in our catalogs, online at www.bonhams.com/us, at offsite auction locations, and at our San Francisco, Los Angeles and New York galleries.

By Telephone

Under special circumstances, we can arrange for you to bid by telephone. To arrange for a telephone bid, please contact our Client Services Department a minimum of 24 hours prior to the sale.

Online

We offer live online bidding for most auctions and accept absentee bids online for all our auctions. Please visit www.bonhams.com/us for details.

Bid Increments

Bonhams generally uses the following increment multiples as bidding progresses:

\$50-200	by \$10s
\$200-500	by \$20/50/80s
\$500-1,000	by \$50s
\$1,000-2,000	by \$100s
\$2,000-5,000	by \$200/500/800s
\$5,000-10,000	by \$500s
\$10,000-20,000	by \$1,000s
\$20,000-50,000	by \$2,000/5,000/8,000s
\$50,000-100,000	by \$5,000s
\$100,000-200,000	by \$10,000s
above \$200,000	at auctioneer's discretion

The auctioneer may split or reject any bid at any time at his or her discretion as outlined in the Conditions of Sale.

Currency Converter

Solely for the convenience of bidders, a currency converter may be provided at Bonhams' auctions. The rates quoted for conversion of other currencies to U.S. Dollars are indications only and should not be relied upon by a bidder, and neither Bonhams nor its agents shall be responsible for any errors or omissions in the operation or accuracy of the currency converter.

Buyer's Premium

A buyer's premium is added to the winning bid price of each individual lot purchased, at the rates set forth in the Conditions of Sale. The winning bid price plus the premium constitute the purchase price for the lot. Applicable sales taxes are computed based on this figure, and the total becomes your final purchase price.

Unless specifically illustrated and noted, fine art frames are not included in the estimate or purchase price. Bonhams accepts no liability for damage or loss to frames during storage or shipment.

All sales are final and subject to the Conditions of Sale found in our catalogs, on our website, and available at the reception desk.

Payment

All buyers are asked to pay and pick up by 3pm on the business day following the auction. Payment may be made to Bonhams by cash, checks drawn on a U.S. bank, money order, wire transfer, or by Visa, MasterCard, American Express or Discover credit or charge card or debit card. All items must be paid for within 5 business days of the sale. Please note that payment by personal or business check may result in property not being released until purchase funds clear our bank. For payments sent by mail, please remit to Cashier Department, 220 San Bruno Avenue, San Francisco, CA 94103.

Sales Tax

Residents of states listed in Paragraph 1 of the Conditions of Sale must pay applicable sales tax. Other state or local taxes (or compensation use taxes) may apply. Sales tax will be automatically added to the invoice unless a valid resale number has been furnished or the property is shipped via common carrier to destinations outside the states listed in the Conditions of Sale. If you wish to use your resale license please contact Cashiers for our form.

Shipping & Removal

Bonhams can accommodate shipping for certain items. Please contact our Cashiers Department for more information or to obtain a quote. Carriers are not permitted to deliver to PO boxes.

International buyers are responsible for all import/export customs duties and taxes. An invoice stating the actual purchase price will accompany all international purchases.

Collection of Purchases

Please arrange for the packing and transport of your purchases prior to collection at our office. If you are sending a third party shipper, please request a release form from us and return it to +1 (212) 644 9009 prior to your scheduled pickup. To schedule collection of purchases, please call +1 (212) 644 9001.

Handling and Storage Charges

Please note that our offices have requirements for freight elevator usage. Please contact us to schedule an elevator appointment for pickup of any large or awkward items. Bonhams will hold all purchased lots in our gallery until Friday December 16 without penalty. After December 16 collection of lots will be by appointment only. Please call +1 (212) 644 9001 at least 24 hours in advance to make an appointment.

Storage charges of \$5 per lot, per day will begin accruing for any lots not collected by the 31st day after the auction.

Bonhams reserves the right to remove uncollected sold lots to the warehouse of our choice at the buyer's risk and expense. Handling and storage fees will apply.

Auction Results

To find out the final purchase price for any lot following the sale, please call our automated auction results line at +1 (800) 223 2854 ext. 3400. All you need is a touch-tone telephone and the lot number. Auction results are usually available on the next business day following the sale or online at www.bonhams.com/us.

IMPORTANT NAMES & NOTICES

DIAMONDS, COLORED STONES & PEARLS

The Jewelry department of Bonhams & Butterfields recognizes that there are many various forms of treatments and enhancements used in diamonds and colored stones in order to improve their appearance and or color. Techniques such as heat treatment have been used to improve the color and transparency of both sapphires and rubies in addition to other gemstones. Techniques such as oiling have been used to enhance the clarity of emeralds while dying has been used to effect the color of jade. Techniques such as heat treatment, oiling, resin impregnation, irradiation, color diffusion, dying, fracture filling, and HTHP are just a few off the techniques that are in use today. Prospective buyers are therefore reminded that unless otherwise noted in our catalog description it must be assumed that some form of enhancement may have been used and that such treatment may not always be permanent or detectable and that our estimates have taken such possibilities into account. As a matter of policy, Bonhams & Butterfields endeavors to obtain certificates from recognized gemological laboratories when such certificates are deemed crucial to the authenticity of a gemstone. It is not possible however to gain certificates for all items offered for sale and it is therefore recommended where there is no mention of a certificate that all prospective buyers consult with one of our department specialists prior to purchase of such items.

PLEASE NOTE: A number of laboratories issue certificates that give more detailed descriptions of gemstones, however there may not be consensus between different laboratories on the degrees, or types of treatment for any particular gemstone. Neither is there necessarily consensus between different laboratories, or private appraisers, on the grading of diamonds. All gemstone weights are approximations only and although an independent laboratory grading may be used in the catalog text, we cannot guarantee such gradings.

Images shown may appear smaller or larger than actual size.

Although we endeavor to mention in our descriptions significant defects, needed repairs, absent stones and the like, **WE DO NOT GUARANTEE THAT THE DESCRIPTIONS ARE COMPREHENSIVE.** Please examine all lots carefully. It is the responsibility of the prospective bidder, or his agent, to determine the condition of lots during the preview. Condition reports have been created for most lots in this auction, and are available upon request. Please contact the Jewelry department at least two days prior to the sale date for additional information.

NOTICE REGARDING BURMESE JADEITE AND RUBIES

Current law dictates that jadeite and rubies of Burmese origin and any articles of jewelry containing jadeite or rubies of Burmese origin may not be imported into the U.S. Certification that such jadeite or rubies were not mined in or extracted from Burma is required for importation of them into the U.S.

It is the responsibility of the buyer to investigate any applicable restrictions on purchased property and to obtain any export or import licenses and/or certificates as well as any other required documentation before shipping. The buyer's inability to export or import any such items or to do so timely shall not serve as the basis for any cancellation or rescission of the sale or any delay in payment. Prospective buyers who are uncertain as to whether a lot is subject to these restrictions or any other restrictions on importation or exportation are advised to consult with the specialist department in which the property is offered.

REGULATED SPECIES MATERIALS AND CITES PERMITS

The export of a lot from the United States or import into certain countries may be subject to export or import regulations, licensure and/or other restrictions; in particular, lots containing plant or animal materials such as ivory, rhinoceros horn, tortoiseshell, coral, whalebone or certain types of woods, irrespective of age or value, may require the granting of one or more export or import licenses

or certificates, or may be banned from import altogether by some countries. Moreover, the ability to obtain an export license or certificate does not insure the ability to obtain an import license or certificate in another country. Lots that contain such regulated species materials may also not be eligible for exportation or for re-importation into the United States if they are not at least 100 years of age, and, under current law, lots containing African Elephant Ivory may no longer be re-imported into the United States regardless of age. In addition, resales of lots containing certain regulated species materials may be subject to restrictions in some jurisdictions.

Lots noted in the catalog with a **Y** next to the lot number contain one or more such regulated plant or animal materials. **It is the buyer's responsibility to investigate any such restrictions and to obtain any relevant export or import licenses. Please note that this process is governed by local authorities and may take considerable time. Regardless of any delay in the obtaining of an export or import license or certificate or denial of a license's or certificate's issuance, purchased lots shall be paid for in accordance with the Conditions of Sale, and any such delay or denial shall not serve as the basis for cancellation of any sale.** Prospective buyers are advised to obtain information from the relevant regulatory authorities regarding export and import restrictions, requirements, and costs prior to bidding.

Prospective buyers should also check with their local (e.g. state) regulatory authorities regarding any local restrictions and/or permit requirements that may apply with respect to purchases of regulated species materials, including without limitation purchases of items containing elephant ivory or rhino horn. For example, we are advised that New York buyers of any lot containing elephant or mammoth ivory or rhino horn will be responsible for obtaining a New York State permit before taking possession of the lot within New York State, and that the State of New Jersey has banned the import of items containing elephant or marine mammal ivory or rhino horn into that state.

Upon request, Bonhams can refer the purchaser to a third party agent to assist the purchaser in attempting to obtain the appropriate licenses and/or certificates. However, there is no assurance that any necessary licenses or certificates can be obtained. Please contact the Specialist Department for a suggested list of shipping agents prior to placing a bid if you are uncertain as to whether a lot is subject to export/import license or certificate requirements or related restrictions.

WATCHES

Although we endeavor to mention in our descriptions significant defects, needed repairs, absent stones and the like, **WE DO NOT GUARANTEE THAT THE DESCRIPTIONS ARE COMPREHENSIVE.** Please examine all watches carefully. It is the responsibility of the prospective bidder, or his agent, to determine the condition of watches during the preview. Except as expressly set forth in the Conditions of Sale, all watches are sold "as is". We do not guarantee the accuracy or operation of any watch function such as timekeeping, chronograph, calendar, repeater or register.

We make no judgments as to whether diamond dials or diamond bezels originated at the factory or are later additions.

Auction Registration Form

(Attendee / Absentee / Online / Telephone Bidding)

Please circle your bidding method above.

--	--	--	--

Paddle number (for office use only)

General Notice: This sale will be conducted in accordance with Bonhams Conditions of Sale, and your bidding and buying at the sale will be governed by such terms and conditions. Please read the Conditions of Sale in conjunction with the Buyer's Guide relating to this sale and other published notices and terms relating to bidding. Payment by personal or business check may result in your property not being released until purchase funds clear our bank. Checks must be drawn on a U.S. bank.

Notice to Absentee Bidders: In the table below, please provide details of the lots on which you wish to place bids at least 24 hours prior to the sale. Bids will be rounded down to the nearest increment. Please refer to the Buyer's Guide in the catalog for further information relating to instructions to Bonhams to execute absentee bids on your behalf. Bonhams will endeavor to execute bids on your behalf but will not be liable for any errors or non-executed bids.

Notice to First Time Bidders: New clients are requested to provide photographic proof of ID - passport, driving license, ID card, together with proof of address - utility bill, bank or credit card statement etc. Corporate clients should also provide a copy of their articles of association / company registration documents, together with a letter authorizing the individual to bid on the company's behalf. Failure to provide this may result in your bids not being processed. For higher value lots you may also be asked to provide a bankers reference.

Notice to online bidders; If you have forgotten your username and password for www.bonhams.com, please contact Client Services.

If successful

- I will collect the purchases myself
- Please contact me with a shipping quote (if applicable)
- I will arrange a third party to collect my purchase(s)

Please mail or fax the completed Registration Form and requested information to:

Bonhams Client Services Department
 580 Madison Avenue
 New York, New York 10022
 Tel +1 (212) 644 9001
 Fax +1 (212) 644 9009
 Automated Auction Results
 Tel +1 (415) 503 3410

Bonhams

Sale title: Fine Jewelry		Sale date: Tuesday December 6, 2016	
Sale no. 23483		Sale venue: New York	
General Bid Increments:			
\$10 - 200by 10s		\$10,000 - 20,000by 1,000s	
\$200 - 500by 20 / 50 / 80s		\$20,000 - 50,000by 2,000 / 5,000 / 8,000s	
\$500 - 1,000by 50s		\$50,000 - 100,000by 5,000s	
\$1,000 - 2,000by 100s		\$100,000 - 200,000by 10,000s	
\$2,000 - 5,000by 200 / 500 / 800s		above \$200,000at the auctioneer's discretion	
\$5,000 - 10,000by 500s		The auctioneer has discretion to split any bid at any time.	
Customer Number		Title	
First Name		Last Name	
Company name (to be invoiced if applicable)			
Address			
City		County / State	
Post / Zip code		Country	
Telephone mobile		Telephone daytime	
Telephone evening		Fax	
Telephone bidders: indicate primary and secondary contact numbers by writing ① or ② next to the telephone number.			
E-mail (in capitals) _____			
By providing your email address above, you authorize Bonhams to send you marketing materials and news concerning Bonhams and partner organizations. Bonhams does not sell or trade email addresses.			
I am registering to bid as a private client <input type="checkbox"/>		I am registering to bid as a trade client <input type="checkbox"/>	
Resale: please enter your resale license number here _____ We may contact you for additional information.			

SHIPPING	
Shipping Address (if different than above):	
Address: _____	Country: _____
City: _____	Post/ZIP code: _____

Please note that all telephone calls are recorded.

Type of bid (A-Absentee, T-Telephone)	Lot no.	Brief description (In the event of any discrepancy, lot number and not lot description will govern.) If you are bidding online there is no need to complete this section.	MAX bid in US\$ (excluding premium and applicable tax) Emergency bid for telephone bidders only*

You instruct us to execute each absentee bid up to the corresponding bid amount indicated above.

* Emergency Bid: A maximum bid (exclusive of Buyer's Premium and tax) to be executed by Bonhams **only** if we are unable to contact you by telephone or should the connection be lost during bidding.

BY SIGNING THIS FORM YOU AGREE THAT YOU HAVE READ AND UNDERSTAND OUR CONDITIONS OF SALE AND SHALL BE LEGALLY BOUND BY THEM, AND YOU AGREE TO PAY THE BUYER'S PREMIUM, ANY APPLICABLE TAXES, AND ANY OTHER CHARGES MENTIONED IN THE BUYER'S GUIDE OR CONDITIONS OF SALE. THIS AFFECTS YOUR LEGAL RIGHTS.	
Your signature: _____	Date: _____



EB 1793

Bonhams

580 Madison Avenue
New York, New York 10022

+1 (212) 644 9001

+1 (212) 644 9009 fax

